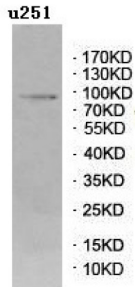
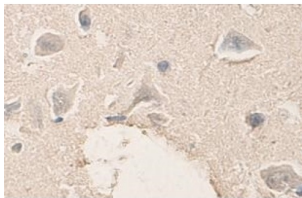


Phosphatidylinositol 3-Kinase Regulatory Subunit Beta (PIK3R2) Antibody

Catalogue No.: abx037630



WB analysis of U251 cell lysates.



IHC-P analysis of brain tissue, with cytoplasmic staining.

Rabbit Polyclonal against the PIK3R2 protein.

Target:	Phosphatidylinositol 3-Kinase Regulatory Subunit Beta (PIK3R2)
Clonality:	Polyclonal
Reactivity:	Human
Tested Applications:	ELISA, WB, IHC
Host:	Rabbit
Recommended dilutions:	ELISA: 1/20000 - 1/80000, WB: 1/500 - 1/2000, IHC: 1/100 - 1/200. Optimal dilutions/concentrations should be determined by the end user.
Conjugation:	Unconjugated
Immunogen:	A peptide corresponding to the N-terminal region of human PIK3R2 protein.
Isotype:	IgG
Form:	Lyophilized

Datasheet

Version: 4.0.0
Revision date: 09 Apr 2025



Purification:	Purified by antigen affinity column chromatography.
Reconstitution:	Reconstitute in 100 µl of sterile distilled H ₂ O with 50% glycerol.
Storage:	Store at -20 °C. Avoid repeated freeze/thaw cycles.
UniProt Primary AC:	O00459 (UniProt , ExPASy)
Gene Symbol:	PIK3R2
GeneID:	5296
OMIM:	603157
NCBI Accession:	NP_005018.1
KEGG:	hsa:5296
String:	9606.ENSP0000022254
Molecular Weight:	Observed MW: 80 kDa
Buffer:	Prior to lyophilization: 1% BSA and 0.02% NaN ₃ .
Concentration:	Lyophilized form: Not applicable. After reconstitution: 1 mg/ml.
Note:	THIS PRODUCT IS FOR RESEARCH USE ONLY. NOT FOR USE IN DIAGNOSTIC, THERAPEUTIC OR COSMETIC PROCEDURES. NOT FOR HUMAN OR ANIMAL CONSUMPTION.

For Reference Only