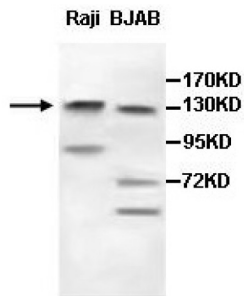
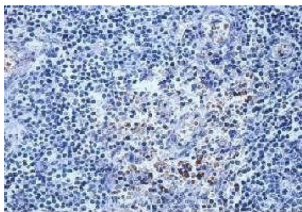


AF4/FMR2 Family Member 3 (AFF3) Antibody

Catalogue No.: abx038302



WB analysis of Raji and BJAB cell lysates, using AFF3 Antibody (1/500 dilution).



IHC-P analysis of fetal lymphoid, using AFF3 antibody (1/100 dilution).

Rabbit Polyclonal against the AFF3 protein.

Target:	AF4/FMR2 Family Member 3 (AFF3)
Clonality:	Polyclonal
Reactivity:	Human, Mouse
Tested Applications:	ELISA, WB, IHC
Host:	Rabbit
Recommended dilutions:	ELISA: 1/20000 - 1/80000, WB: 1/500 - 1/2000, IHC: 1/100 - 1/200. Optimal dilutions/concentrations should be determined by the end user.
Conjugation:	Unconjugated
Immunogen:	A peptide corresponding to N-terminal region of human AFF3 protein.
Isotype:	IgG
Form:	Lyophilized
Purification:	Purified by Protein A/G column chromatography.

Datasheet

Version: 3.0.0
Revision date: 03 Dec 2024



Reconstitution:	Reconstitute in 100 µl of sterile distilled H ₂ O with 50% glycerol.
Storage:	Store at -20 °C. Avoid repeated freeze/thaw cycles.
UniProt Primary AC:	P51826 (UniProt , ExPASy)
Gene Symbol:	AFF3
GeneID:	3899
OMIM:	601464
NCBI Accession:	NM_001025108.1
HGNC:	6473
KEGG:	hsa:3899
Molecular Weight:	Observed MW: 133 kDa
Buffer:	Prior to lyophilization: 0.02% NaN ₃ .
Concentration:	Lyophilized form: Not applicable. After reconstitution: 1 mg/ml.
Note:	This product is for research use only.

For Reference Only