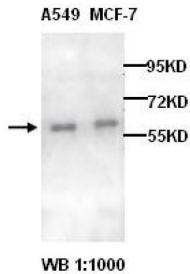
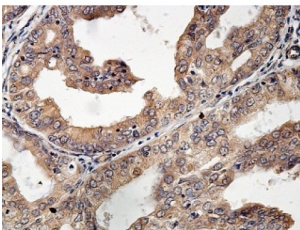


Alpha 1D Adrenergic Receptor (ADRA1D) Antibody

Catalogue No.: abx038364



Western blot analysis of A549 and MCF-7 cell lysates, with Alpha 1D Adrenergic Receptor (ADRA1D) Antibody.



Immunohistochemical staining of formalin-fixed paraffin-embedded cervical cancer showing cytoplasmic and membrane staining with Alpha 1D Adrenergic Receptor (ADRA1D) Antibody at a dilution of 1/100.

Alpha 1D Adrenergic Receptor (ADRA1D) Antibody is a Rabbit Polyclonal against Alpha 1D Adrenergic Receptor (ADRA1D).

Target:	Alpha 1D Adrenergic Receptor (ADRA1D)
Clonality:	Polyclonal
Reactivity:	Human, Mouse, Rat, Zebrafish, Drosophila
Tested Applications:	ELISA, WB, IHC
Host:	Rabbit
Recommended dilutions:	ELISA: 1/20000 - 1/80000, WB: 1/500 - 1/2000, IHC: 1/100 - 1/200. Optimal dilutions/concentrations should be determined by the end user.
Conjugation:	Unconjugated
Immunogen:	A peptide corresponding to the middle region of human ADRA1D protein.
Isotype:	IgG
Form:	Lyophilized
Purification:	Purified by Protein A/G column chromatography.

Datasheet

Version: 1.0.0

Revision date: 06 Oct 2024



Reconstitution: Reconstitute in 100 µl of sterile distilled H₂O with 50% glycerol.

Storage: Store at -20 °C. Avoid repeated freeze/thaw cycles.

NCBI Accession: NM_000678

Buffer: Prior to lyophilization: 0.02% NaN₃.

Concentration: Lyophilized form: Not applicable.
After reconstitution: 1 mg/ml.

Note: This product is for research use only.

For Reference Only