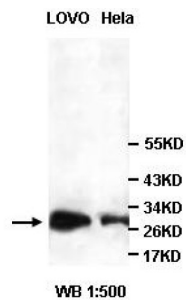
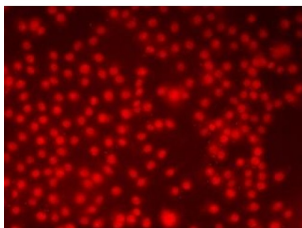


## High Mobility Group Protein B1 (HMGB1) Antibody

Catalogue No.: abx048481



Western blot analysis of LOVO and HeLa cell lysates, using HMGB1 antibody.



IF analysis of HeLa cells with nuclear staining, using HMGB1 antibody (1/100 dilution).

Rabbit Polyclonal against the HMGB1 protein.

<b>Target:</b>	High Mobility Group Protein B1 (HMGB1)
<b>Clonality:</b>	Polyclonal
<b>Reactivity:</b>	Human
<b>Tested Applications:</b>	ELISA, WB, IF/ICC
<b>Host:</b>	Rabbit
<b>Recommended dilutions:</b>	ELISA: 1/20000 - 1/80000, WB: 1/500 - 1/2000, IF/ICC: 1/100 - 1/500. Optimal dilutions/concentrations should be determined by the end user.
<b>Conjugation:</b>	Unconjugated
<b>Immunogen:</b>	Recombinant fragment corresponding to 164-811 AA of human HMGB1.
<b>Isotype:</b>	IgG
<b>Form:</b>	Lyophilized
<b>Purification:</b>	Purified by antigen affinity column chromatography.

# Datasheet

Version: 2.0.0  
Revision date: 28 Jan 2025



**Reconstitution:** Reconstitute in 100 µl of sterile distilled H<sub>2</sub>O with 50% glycerol.

**Storage:** Store at -20 °C. Avoid repeated freeze/thaw cycles.

**NCBI Accession:** NM\_002128

**Molecular Weight:** Observed MW: 30 kDa

**Buffer:** Prior to lyophilization: 1% BSA and 0.02% NaN<sub>3</sub>.

**Specificity:** Predicted to react with Mouse and Rat HMGB1.

**Concentration:** Lyophilized form: Not applicable.  
After reconstitution: 1 mg/ml.

**Note:** This product is for research use only.

For Reference Only