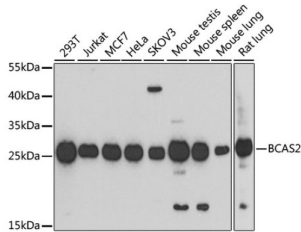
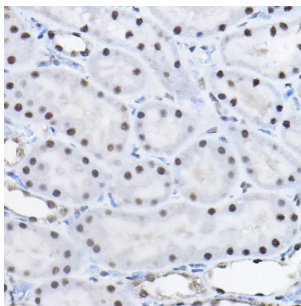


Pre-mRNA-Splicing Factor SPF27 (BCAS2) Antibody

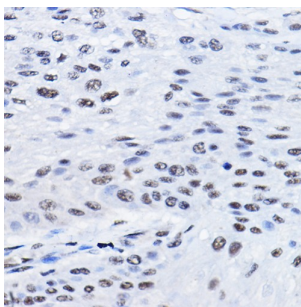
Catalogue No.: abx003280



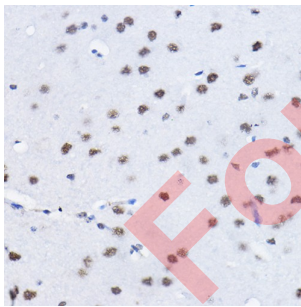
Western blot analysis of various lysates using BCAS2 Antibody at 1/1000 dilution. Secondary antibody: HRP-conjugated Goat anti-Rabbit IgG (H+L) at 1/10000 dilution. Lysates/proteins: 25 µg per lane. Blocking buffer: 3% nonfat dry milk in TBST. Exposure time: 90s.



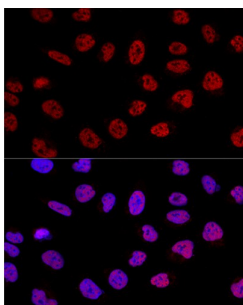
Immunohistochemistry analysis of paraffin-embedded Rat kidney using BCAS2 Antibody at dilution of 1/100 (40x lens). High pressure antigen retrieval performed in 0.01 M Citrate buffer (pH 6.0) prior to IHC staining.



Immunohistochemistry analysis of paraffin-embedded Human esophageal cancer using BCAS2 Antibody at dilution of 1/100 (40x lens). High pressure antigen retrieval performed in 0.01 M Citrate buffer (pH 6.0) prior to IHC staining.



Immunohistochemistry analysis of paraffin-embedded Mouse brain using BCAS2 Antibody at dilution of 1/100 (40x lens). High pressure antigen retrieval performed in 0.01 M Citrate buffer (pH 6.0) prior to IHC staining.



Confocal immunofluorescence analysis of U2OS cells using BCAS2 Antibody at dilution of 1/100. Blue: DAPI for nuclear staining.

Datasheet

Version: 7.0.0
Revision date: 15 Apr 2025



BCAS2 Antibody is a Rabbit Polyclonal antibody against BCAS2.

Target:	Pre-mRNA-Splicing Factor SPF27 (BCAS2)
Clonality:	Polyclonal
Reactivity:	Human, Mouse, Rat
Tested Applications:	ELISA, WB, IHC, IF/ICC
Host:	Rabbit
Recommended dilutions:	ELISA: 1 µg/ml, WB: 1/500 - 1/2000, IHC-P: 1/50 - 1/200, IF/ICC: 1/50 - 1/200. Not tested in IHC-F. Optimal dilutions/concentrations should be determined by the end user.
Conjugation:	Unconjugated
Immunogen:	Recombinant fusion protein containing a sequence corresponding to amino acids 1-225 of human BCAS2.
Isotype:	IgG
Form:	Liquid
Purification:	Purified by affinity chromatography.
Storage:	Aliquot and store at -20°C. Avoid repeated freeze/thaw cycles.
UniProt Primary AC:	O75934 (UniProt , ExPASy)
Gene Symbol:	BCAS2
GeneID:	10286
NCBI Accession:	NP_005863.1
KEGG:	hsa:10286
String:	9606.ENSP00000358554
Molecular Weight:	Calculated MW: 26 kDa Observed MW: 25 kDa
Buffer:	PBS, pH 7.3, containing 0.02% sodium azide, 50% glycerol.
Concentration:	> 0.2 mg/ml

Datasheet

Version: 7.0.0

Revision date: 15 Apr 2025



Note:

THIS PRODUCT IS FOR RESEARCH USE ONLY. NOT FOR USE IN DIAGNOSTIC, THERAPEUTIC OR COSMETIC PROCEDURES. NOT FOR HUMAN OR ANIMAL CONSUMPTION.

For Reference Only