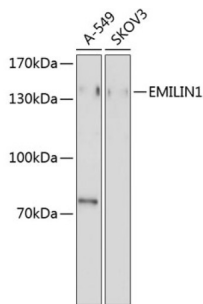


Elastin Microfibril Interfacer 1 (EMILIN1) Antibody

Catalogue No.: abx003359



Western blot analysis of extracts of various cell lines using EMILIN1 Antibody

EMILIN1 Antibody is a Rabbit Polyclonal antibody against EMILIN1. This gene encodes an extracellular matrix glycoprotein that is characterized by an N-terminal microfibril interface domain, a coiled-coiled alpha-helical domain, a collagenous domain and a C-terminal globular C1q domain. The encoded protein associates with elastic fibers at the interface between elastin and microfibrils and may play a role in the development of elastic tissues including large blood vessels, dermis, heart and lung.

Target:	Elastin Microfibril Interfacer 1 (EMILIN1)
Clonality:	Polyclonal
Reactivity:	Human
Tested Applications:	WB
Host:	Rabbit
Recommended dilutions:	WB: 1/200 - 1/2000. Optimal dilutions/concentrations should be determined by the end user.
Conjugation:	Unconjugated
Immunogen:	Recombinant fusion protein corresponding to human EMILIN1
Isotype:	IgG
Form:	Liquid
Purification:	Purified by affinity chromatography.
Storage:	Aliquot and store at -20°C. Avoid repeated freeze/thaw cycles.
UniProt Primary AC:	Q9Y6C2 (UniProt , ExPASy)
Gene Symbol:	EMILIN1

Datasheet

Version: 3.0.0
Revision date: 14 Apr 2025



GeneID: [11117](#)

OMIM: [130660](#)

NCBI Accession: NP_008977.1

HGNC: 19880

Ensembl: ENSG00000138080

String: [9606.ENSP00000369677](#)

Molecular Weight: Calculated MW: 35 kDa/106 kDa
Observed MW: 135 kDa

Buffer: PBS, pH 7.3, containing 0.02% sodium azide, 50% glycerol.

Concentration: 1 mg/ml

Note: THIS PRODUCT IS FOR RESEARCH USE ONLY. NOT FOR USE IN DIAGNOSTIC, THERAPEUTIC OR COSMETIC PROCEDURES. NOT FOR HUMAN OR ANIMAL CONSUMPTION.

For Reference Only