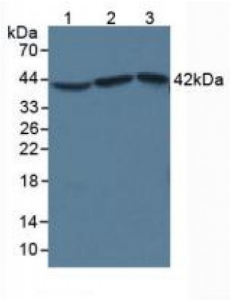
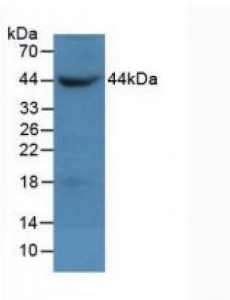


Beta Actin (ACTB) Antibody

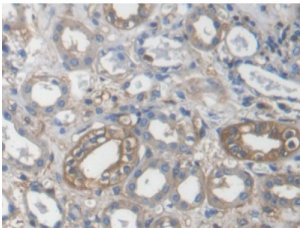
Catalogue No.: abx132139



Western blot analysis of (1) Human HeLa cells, (2) Human Lung Tissue and (3) Human A549 Cells.



Western blot analysis of recombinant Human ACTB.



IHC-P analysis of Human Kidney Tissue, with DAB staining.

Actin Beta Antibody is a Mouse Monoclonal against Actin Beta.

Target: Beta Actin (ACTB)

Clonality: Monoclonal

Reactivity: General

Tested Applications: WB

Host: Mouse

Recommended dilutions: WB: 0.5-5 µg/ml. Optimal dilutions/concentrations should be determined by the end user.

Conjugation: Unconjugated

Datasheet

Version: 1.0.0

Revision date: 01 Sep 2024



Form:	Liquid
Purification:	Purified by Protein A and Protein G affinity chromatography.
Storage:	Aliquot and store at -20°C. Avoid repeated freeze/thaw cycles.
Buffer:	0.01 M PBS, pH 7.4, containing 0.05% Proclin-300, 50% glycerol.
Note:	This product is for research use only.

For Reference Only