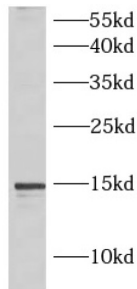
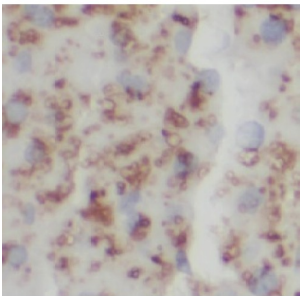


Interleukin 5 (IL5) Antibody

Catalogue No.: abx216288



WB analysis of Mouse liver tissue, using IL5 antibody (1/1000 dilution).



IHC-P analysis of human liver tissue, using IL5 antibody (1/100 dilution).

Interleukin 5 (IL5) Antibody is a Rabbit Polyclonal antibody for the detection of IL5.

This gene encodes a cytokine that acts as a growth and differentiation factor for both B cells and eosinophils. The encoded cytokine plays a major role in the regulation of eosinophil formation, maturation, recruitment and survival. The increased production of this cytokine may be related to pathogenesis of eosinophil-dependent inflammatory diseases. This cytokine functions by binding to its receptor, which is a heterodimer, whose beta subunit is shared with the receptors for interleukine 3 (IL3) and colony stimulating factor 2 (CSF2/GM-CSF). This gene is located on chromosome 5 within a cytokine gene cluster which includes interleukin 4 (IL4), interleukin 13 (IL13), and CSF2. This gene, IL4, and IL13 may be regulated coordinately by long-range regulatory elements spread over 120 kilobases on chromosome 5q31.

Target: Interleukin 5 (IL5)**Clonality:** Polyclonal**Reactivity:** Human, Mouse, Rat**Tested Applications:** ELISA, WB, IHC**Host:** Rabbit**Recommended dilutions:** WB: 1/500 - 1/2000, IHC: 1/50 - 1/200. Optimal dilutions/concentrations should be determined by the end user.**Conjugation:** Unconjugated

Datasheet

Version: 1.0.0
Revision date: 27 Dec 2024



Immunogen:	IL5
Isotype:	IgG
Form:	Liquid
Purity:	≥ 95% (SDS-PAGE)
Purification:	Purified by immunogen affinity chromatography.
Storage:	Aliquot and store at -20°C. Avoid repeated freeze/thaw cycles.
Validity:	12 months.
UniProt Primary AC:	P05113 (UniProt , ExpASY)
Gene Symbol:	IL5
GeneID:	3567
OMIM:	147850
HGNC:	6016
KEGG:	hsa:3567
Ensembl:	ENSG00000113525
String:	9606.ENSP00000231454
Molecular Weight:	Observed MW: 15 kDa
Buffer:	PBS, pH 7.3, with 0.02% sodium azide and 50% glycerol.
Concentration:	2 mg/ml
Note:	This product is for research use only.