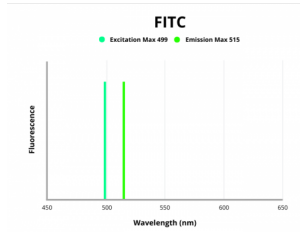


Calnexin-CT Antibody (FITC)

Catalogue No.: abx448037



Fluorescence emission spectra of FITC.

Calnexin-CT Antibody (FITC) is a Rabbit Polyclonal against Calnexin.

Target:	Calnexin
Clonality:	Polyclonal
Reactivity:	Human, Mouse, Rat, Cow, Monkey, Chicken, Dog, Guinea pig, Hamster, Pig, Bird, Rabbit, Sheep, Drosophila, Frog
Tested Applications:	WB, IHC, IF/ICC, FCM, IP
Host:	Rabbit
Recommended dilutions:	WB: 1/2000, IF/ICC: 1/100, IHC: 1/100. Optimal dilutions/concentrations should be determined by the end user.
Conjugation:	FITC
Excitation/Emission:	499/515
Laser Line:	488
Immunogen:	Dog Calnexin C-terminal synthetic peptide conjugated to KLH. Identical to human, mouse and rat calnexin sequences over these residues.
Purification:	Purified by Protein A.
Storage:	Aliquot and store at -20°C. Avoid repeated freeze/thaw cycles.
UniProt Primary AC:	P24643 (UniProt , ExpASY)
GeneID:	403908
NCBI Accession:	NP_001003232.1

Datasheet

Version: 1.0.0
Revision date: 01 Sep 2024



KEGG: cfa:403908

String: [9612.ENSCAFP00000042695](#)

Buffer: PBS, pH 7.2, 50% glycerol, 0.09% sodium azide.

Specificity: Detects the C-terminal domain of Calnexin ~90kDa. Weak detection in Chicken, Drosophila, and Xenopus tissues.

Concentration: 1 mg/ml

Note: This product is for research use only.

For Reference Only