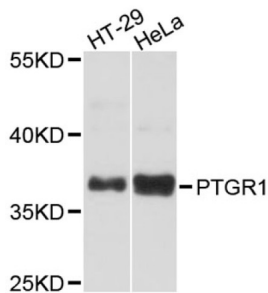


## Prostaglandin Reductase 1 (PTGR1) Antibody

Catalogue No.: abx003388



Western blot analysis of extracts of various cell lines, using PTGR1 antibody (abx003388) at 1:3000 dilution.

PTGR1 Antibody is a Rabbit Polyclonal antibody against PTGR1. This gene encodes an enzyme that is involved in the inactivation of the chemotactic factor, leukotriene B4. The encoded protein specifically catalyzes the NADP+ dependent conversion of leukotriene B4 to 12-oxo-leukotriene B4. A pseudogene of this gene is found on chromosome 1. Alternative splicing results in multiple transcript variants.

<b>Target:</b>	Prostaglandin Reductase 1 (PTGR1)
<b>Clonality:</b>	Polyclonal
<b>Reactivity:</b>	Human, Mouse
<b>Tested Applications:</b>	WB
<b>Host:</b>	Rabbit
<b>Recommended dilutions:</b>	WB: 1/500 - 1/2000. Optimal dilutions/concentrations should be determined by the end user.
<b>Conjugation:</b>	Unconjugated
<b>Immunogen:</b>	Recombinant fusion protein containing a sequence corresponding to amino acids 1-115 of human PTGR1.
<b>Isotype:</b>	IgG
<b>Form:</b>	Liquid
<b>Purification:</b>	Purified by affinity chromatography.
<b>Storage:</b>	Aliquot and store at -20°C. Avoid repeated freeze/thaw cycles.
<b>UniProt Primary AC:</b>	Q14914 ( <a href="#">UniProt</a> , <a href="#">ExPASy</a> )
<b>Gene Symbol:</b>	PTGR1

# Datasheet

Version: 3.0.0  
Revision date: 11 Jan 2025



**GeneID:** [22949](#)

**NCBI Accession:** NP\_036344.2

**KEGG:** hsa:22949

**String:** [9606.ENSP00000385763](#)

**Molecular Weight:** Calculated MW: 36 kDa  
Observed MW: 36 kDa

**Buffer:** PBS, pH 7.3, containing 0.01% thimerosal, 50% glycerol.

**Concentration:** > 0.2 mg/ml

**Note:** This product is for research use only.

For Reference Only