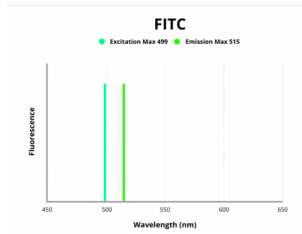


HSP90 alpha / beta Antibody (FITC)

Catalogue No.: abx448263



Fluorescence emission spectra of FITC.

HSP90 alpha/beta Antibody (FITC) is a Llama Polyclonal against HSP90 alpha/beta.

Target: HSP90 alpha/beta

Clonality: Polyclonal

Reactivity: Human, Mouse, Rat

Tested Applications: ELISA, WB

Host: Llama

Recommended dilutions: WB: 1/1000, ELISA: 1/1000. Optimal dilutions/concentrations should be determined by the end user.

Conjugation: FITC

Excitation/Emission: 499/515

Laser Line: 488

Immunogen: Synthetic human HSP90 alpha full length protein

Isotype: IgG₁, IgG₂, IgG₃

Purification: Peptide Affinity Purified

Storage: Aliquot and store at -20°C. Avoid repeated freeze/thaw cycles.

UniProt Primary AC: P07900 ([UniProt](#), [ExPASy](#)) P08238 ([UniProt](#), [ExPASy](#))

GeneID: [Alpha: 3320](#). [Beta: 3326](#).

Datasheet

Version: 1.0.0
Revision date: 27 Jul 2024



NCBI Accession: Alpha: NP_001017963.2. Beta: NP_001258898.1.

Buffer: PBS, pH 7.4, 50% glycerol, 0.09% sodium azide.

Specificity: Detects 90 kDa. Detects HSP90 alpha and beta.

Concentration: 1 mg/ml

Note: This product is for research use only.

For Reference Only