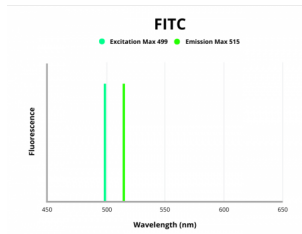


Na-Cl Cotransporter (NCC) Antibody (FITC)

Catalogue No.: abx448246



Fluorescence emission spectra of FITC.

NCC Antibody (FITC) is a Rabbit Polyclonal against NCC.

Target: Na-Cl Cotransporter (NCC)

Clonality: Polyclonal

Reactivity: Human, Mouse, Rat, Dog

Tested Applications: WB, IHC, IF/ICC, IEM

Host: Rabbit

Recommended dilutions: WB: 1/1000, IHC: 1/200. Optimal dilutions/concentrations should be determined by the end user.

Conjugation: FITC

Excitation/Emission: 499/515

Laser Line: 488

Immunogen: Produced against a synthetic peptide mapping to a segment of rat NCC (amino acids 74-95), N-terminal

Purification: Purified by affinity chromatography.

Storage: Aliquot and store at -20°C. Avoid repeated freeze/thaw cycles.

UniProt Primary AC: P55018 ([UniProt](#), [ExPASy](#)) P55017 ([UniProt](#), [ExPASy](#))

GeneID: [54300](#) [6559](#)

NCBI Accession: NP_062218, NP_000330

Datasheet

Version: 2.0.0

Revision date: 29 Aug 2024



Buffer: PBS, 50% glycerol, 0.09% sodium azide.

Specificity: Detects ~160kDa.

Concentration: 1 mg/ml

Note: This product is for research use only.

For Reference Only