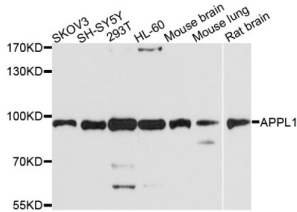


DCC-Interacting Protein 13-Alpha (APPL1) Antibody

Catalogue No.: abx003463



Western blot analysis of extracts of various cell lines, using APPL1 antibody (abx003463) at 1/1000 dilution.

APPL1 Antibody is a Rabbit Polyclonal antibody against APPL1. The protein encoded by this gene has been shown to be involved in the regulation of cell proliferation, and in the crosstalk between the adiponectin signalling and insulin signalling pathways. The encoded protein binds many other proteins, including RAB5A, DCC, AKT2, PIK3CA, adiponectin receptors, and proteins of the NuRD/MeCP1 complex. This protein is found associated with endosomal membranes, but can be released by EGF and translocated to the nucleus.

Target:	DCC-Interacting Protein 13-Alpha (APPL1)
Clonality:	Polyclonal
Reactivity:	Human, Mouse, Rat
Tested Applications:	WB
Host:	Rabbit
Recommended dilutions:	WB: 1/500 - 1/2000. Optimal dilutions/concentrations should be determined by the end user.
Conjugation:	Unconjugated
Immunogen:	Recombinant fusion protein containing a sequence corresponding to amino acids 1-210 of human APPL1.
Isotype:	IgG
Form:	Liquid
Purification:	Purified by affinity chromatography.
Storage:	Aliquot and store at -20°C. Avoid repeated freeze/thaw cycles.
UniProt Primary AC:	Q9UKG1 (UniProt , ExpASY)

Datasheet

Version: 3.0.0
Revision date: 18 Oct 2024



Gene Symbol: APPL1

GeneID: [26060](#)

NCBI Accession: NP_036228.1

String: [9606.ENSP00000288266](#)

Molecular Weight: Calculated MW: 80 kDa
Observed MW: 95 kDa

Buffer: PBS, pH 7.3, containing 0.02% sodium azide, 50% glycerol.

Concentration: > 0.2 mg/ml

Note: This product is for research use only.

For Reference Only