

B-Cell Receptor CD22 / SIGLEC2 (CD22) Antibody

Catalogue No.: abx224015

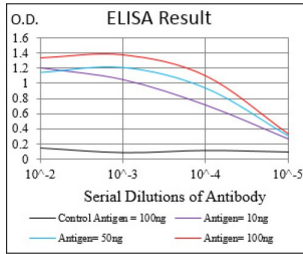


Fig. 1. Black line: Control Antigen (100 ng); Purple line: Antigen(10ng); Blue line: Antigen (50 ng); Red line: Antigen (100 ng)

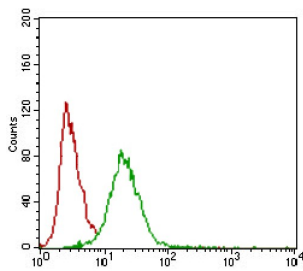


Fig. 2. Flow cytometric analysis of HeLa cells using CD22 mouse mAb (green) and negative control (red).

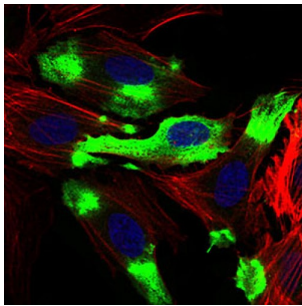


Fig. 3. Immunofluorescence analysis of HeLa cells using CD22 mouse mAb (green). Blue: DRAQ5 fluorescent DNA dye. Red: Actin filaments have been labeled with AF555 phalloidin.

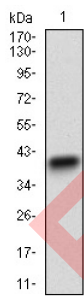


Fig. 4. Western blot analysis using CD22 mAb against human CD22 recombinant protein. (Expected MW is 37 kDa)

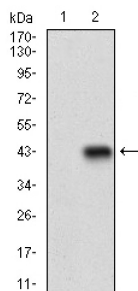


Fig. 5. Western blot analysis using CD22 mAb against HEK293 (1) and CD22 (AA: 621-725)-hlgGfc transfected HEK293 (2) cell lysate.

Datasheet

Version: 1.0.0
Revision date: 11 Feb 2025



CD22 Antibody is a Mouse Monoclonal against CD22.

Target:	B-Cell Receptor CD22 / SIGLEC2 (CD22)
Clonality:	Monoclonal
Reactivity:	Human
Tested Applications:	ELISA, IF/ICC, FCM
Host:	Mouse
Recommended dilutions:	ELISA: 1/10000, IF/ICC: 1/200 - 1/1000, FCM: 1/200 - 1/400. Optimal dilutions/concentrations should be determined by the end user.
Immunogen:	Purified recombinant fragment of human CD22 (AA: 621-725) expressed in E. coli.
Isotype:	IgG ₁
Form:	Liquid
Purification:	Purified from ascites by Protein G chromatography.
Storage:	Aliquot and store at -20°C. Avoid repeated freeze/thaw cycles.
UniProt Primary AC:	P20273 (UniProt , ExpASY)
Gene Symbol:	CD22
GeneID:	933
OMIM:	107266
HGNC:	1643
Ensembl:	ENSG00000012124
Molecular Weight:	95.3 kDa
Buffer:	PBS, containing 0.05% sodium azide.
Concentration:	1 mg/ml
Note:	This product is for research use only.