

Receptor-Type Tyrosine-Protein Phosphatase C / CD45 (PTPRC) Antibody

Catalogue No.: abx224040

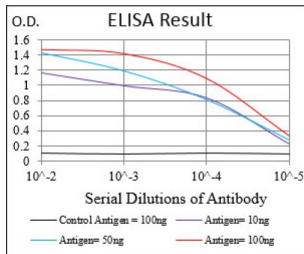


Fig. 1. Black line: Control Antigen (100 ng); Purple line: Antigen(10ng); Blue line: Antigen (50 ng); Red line: Antigen (100 ng)

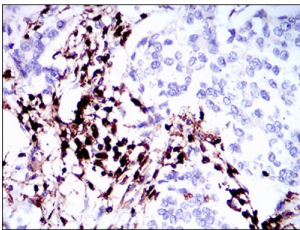


Fig. 2. Immunohistochemical analysis of paraffin-embedded breast cancer tissues using PTPRC mouse mAb with DAB staining.

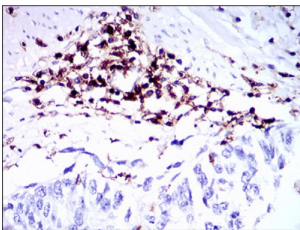


Fig. 3. Immunohistochemical analysis of paraffin-embedded esophageal cancer tissues using PTPRC mouse mAb with DAB staining.



Fig. 4. Western blot analysis using PTPRC mAb against human PTPRC (AA: 928-989) recombinant protein. (Expected MW is 33 kDa)

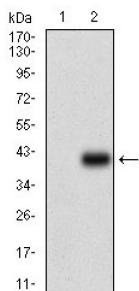


Fig. 5. Western blot analysis using PTPRC mAb against HEK293 (1) and PTPRC (AA: 928-989)-hlgGfC transfected HEK293 (2) cell lysate.

Datasheet

Version: 3.0.0
Revision date: 13 Mar 2025



PTPRC Antibody is a Mouse Monoclonal against PTPRC.

Target:	Receptor-Type Tyrosine-Protein Phosphatase C / CD45 (PTPRC)
Clonality:	Monoclonal
Reactivity:	Human
Tested Applications:	ELISA, IHC
Host:	Mouse
Recommended dilutions:	ELISA: 1/10000, IHC: 1/200 - 1/1000. Optimal dilutions/concentrations should be determined by the end user.
Immunogen:	Purified recombinant fragment of human PTPRC (AA: 928-989) expressed in E. coli.
Isotype:	IgG ₁
Form:	Liquid
Purification:	Purified from ascites by Protein G chromatography.
Storage:	Aliquot and store at -20°C. Avoid repeated freeze/thaw cycles.
UniProt Primary AC:	P08575 (UniProt , ExpASY)
Gene Symbol:	PTPRC
GeneID:	5788
OMIM:	126200
HGNC:	9666
KEGG:	hsa:5788
Ensembl:	ENSG00000081237
String:	9606.ENSP00000411355
Molecular Weight:	147.3 kDa
Buffer:	PBS, containing 0.05% sodium azide.

Datasheet

Version: 3.0.0

Revision date: 13 Mar 2025



Concentration: 1 mg/ml

Note: THIS PRODUCT IS FOR RESEARCH USE ONLY. NOT FOR USE IN DIAGNOSTIC, THERAPEUTIC OR COSMETIC PROCEDURES. NOT FOR HUMAN OR ANIMAL CONSUMPTION.

For Reference Only