

Phospholipase A2, Group X1IA (PLA2G12A) Antibody

Catalogue No.: abx224063

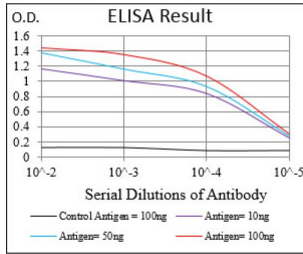


Fig. 1. Black line: Control Antigen (100 ng); Purple line: Antigen(10ng); Blue line: Antigen (50 ng); Red line: Antigen (100 ng)

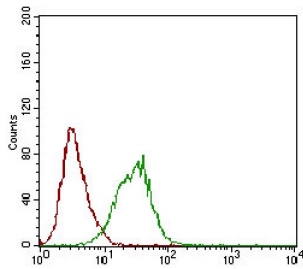


Fig. 2. Flow cytometric analysis of Hela cells using PLA2G12A mouse mAb (green) and negative control (red).

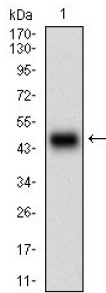


Fig. 3. Western blot analysis using PLA2G12A mAb against human PLA2G12A (AA: 21-189) recombinant protein. (Expected MW is 44.5 kDa)

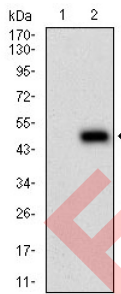


Fig. 4. Western blot analysis using PLA2G12A mAb against HEK293 (1) and PLA2G12A (AA: 21-189)-hlgGfC transfected HEK293 (2) cell lysate.

PLA2G12A Antibody is a Mouse Monoclonal against PLA2G12A.

Target: Phospholipase A2, Group X1IA (PLA2G12A)

Clonality: Monoclonal

Reactivity: Human

Datasheet

Version: 1.0.0
Revision date: 24 Nov 2024



Tested Applications:	ELISA, FCM
Host:	Mouse
Recommended dilutions:	ELISA: 1/10000, FCM: 1/200 - 1/400. Optimal dilutions/concentrations should be determined by the end user.
Immunogen:	Purified recombinant fragment of human PLA2G12A (AA: 21-189) expressed in E. coli.
Isotype:	IgG ₁
Form:	Liquid
Purification:	Purified from ascites by Protein G chromatography.
Storage:	Aliquot and store at -20°C. Avoid repeated freeze/thaw cycles.
UniProt Primary AC:	Q9BZM1 (UniProt , ExPASy)
Gene Symbol:	PLA2G12A
GeneID:	81579
OMIM:	611652
HGNC:	18554
Ensembl:	ENSG00000123739
String:	9606.ENSP00000243501
Molecular Weight:	21 kDa
Buffer:	PBS, containing 0.05% sodium azide.
Concentration:	1 mg/ml
Note:	This product is for research use only.