

# Luteinizing Hormone/Choriogonadotropin Receptor (LHCGR) Antibody

Catalogue No.: abx224131

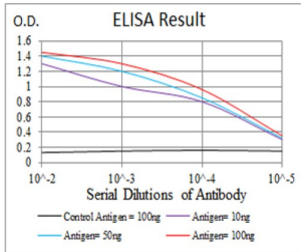


Fig. 1. Figure 1: Black line: Control Antigen (100 ng); Purple line: Antigen (10ng); Blue line: Antigen (50 ng); Red line: Antigen (100 ng)

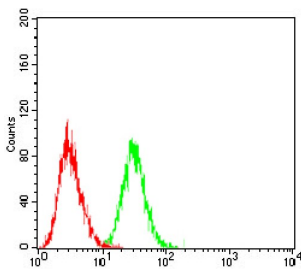


Fig. 2. Flow cytometric analysis of Jurkat cells using LHCGR mouse mAb (green) and negative control (red). Figure 3: Immunofluorescence analysis of HeLa cells using LHR-29 mouse mAb (green). Blue: DRAQ5 fluorescent DNA dye. Red: Actin filaments have been labeled with AF 555 phalloidin.

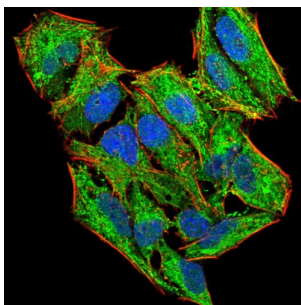
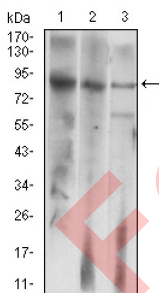


Fig. 3. Western blot analysis using LHCGR mouse mAb against HepG2 (1) Jurkat (2) and SMMC-7721 (3) cell lysate.



LHCGR Antibody is a Mouse Monoclonal against LHCGR.

**Target:** Luteinizing Hormone/Choriogonadotropin Receptor (LHCGR)

**Clonality:** Monoclonal

**Reactivity:** Human

# Datasheet

Version: 1.0.0  
Revision date: 25 Nov 2024



<b>Tested Applications:</b>	ELISA, WB, IF/ICC, FCM
<b>Host:</b>	Mouse
<b>Recommended dilutions:</b>	ELISA: 1/10000, WB: 1/500 - 1/2000, IF/ICC: 1/200 - 1/1000, FCM: 1/200 - 1/400. Optimal dilutions/concentrations should be determined by the end user.
<b>Immunogen:</b>	LHR-29 from ATCC
<b>Isotype:</b>	IgG <sub>1</sub>
<b>Form:</b>	Liquid
<b>Purification:</b>	Purified from ascites by Protein G chromatography.
<b>Storage:</b>	Aliquot and store at -20°C. Avoid repeated freeze/thaw cycles.
<b>UniProt Primary AC:</b>	P22888 ( <a href="#">UniProt</a> , <a href="#">ExPASy</a> )
<b>Gene Symbol:</b>	LHCGR
<b>GeneID:</b>	<a href="#">3973</a>
<b>OMIM:</b>	<a href="#">152790</a>
<b>HGNC:</b>	6585
<b>KEGG:</b>	hsa:3973
<b>Ensembl:</b>	ENSG00000138039
<b>String:</b>	<a href="#">9606.ENSP00000294954</a>
<b>Molecular Weight:</b>	78.6 kDa
<b>Buffer:</b>	PBS, containing 0.05% sodium azide.
<b>Concentration:</b>	1 mg/ml
<b>Note:</b>	This product is for research use only.