

Ezrin (EZR) Antibody

Catalogue No.: abx224148

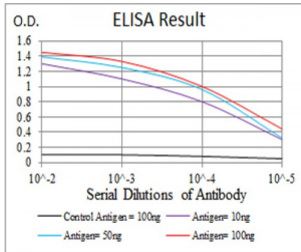
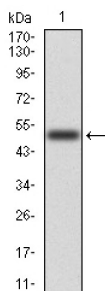
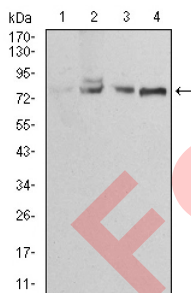
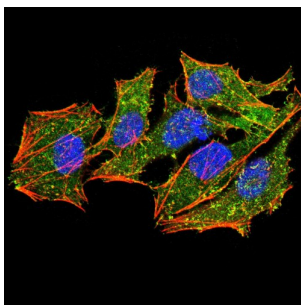
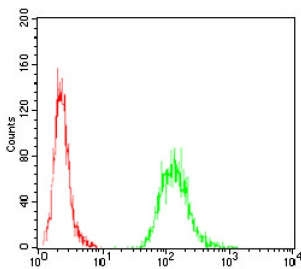
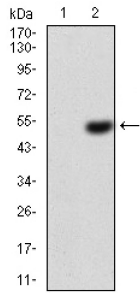


Fig. 1. Figure 1: Black line: Control Antigen (100 ng); Purple line: Antigen(10ng); Blue line: Antigen (50 ng); Red line: Antigen (100 ng)



Datasheet

Version: 1.0.0
Revision date: 16 Jul 2024



EZR Antibody is a Mouse Monoclonal against EZR.

Target:	Ezrin (EZR)
Clonality:	Monoclonal
Reactivity:	Human
Tested Applications:	ELISA, WB, IF/ICC, FCM
Host:	Mouse
Recommended dilutions:	ELISA: 1/10000, WB: 1/500 - 1/2000, IF/ICC: 1/200 - 1/1000, FCM: 1/200 - 1/400. Optimal dilutions/concentrations should be determined by the end user.
Immunogen:	Purified recombinant fragment of human EZR (AA: 292-464) expressed in E. coli.
Isotype:	IgG ₁
Form:	Liquid
Purification:	Purified from ascites by Protein G chromatography.
Storage:	Aliquot and store at -20°C. Avoid repeated freeze/thaw cycles.
UniProt Primary AC:	P15311 (UniProt , ExPASy)
Gene Symbol:	EZR
GeneID:	7430
OMIM:	123900
HGNC:	12691

Datasheet

Version: 1.0.0
Revision date: 16 Jul 2024

KEGG: hsa:7430

Ensembl: ENSG00000092820

String: [9606.ENSP00000356042](#)

Molecular Weight: 69.4 kDa

Buffer: PBS, containing 0.05% sodium azide.

Concentration: 1 mg/ml

Note: This product is for research use only.

For Reference Only