

Cell Death Activator CIDE-3 (CIDEDEC) Antibody

Catalogue No.: abx224171

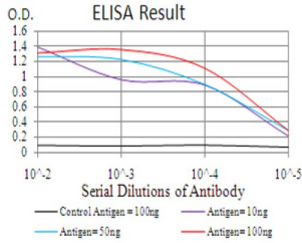
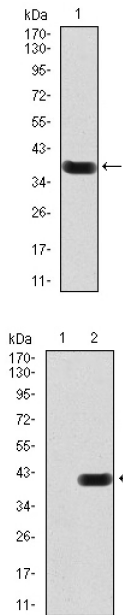


Fig. 1. Black line: Control Antigen (100 ng); Purple line: Antigen(10ng); Blue line: Antigen (50 ng); Red line: Antigen (100 ng)



CIDEDEC Antibody is a Mouse Monoclonal against CIDEDEC.

Target: Cell Death Activator CIDE-3 (CIDEDEC)

Clonality: Monoclonal

Reactivity: Human

Tested Applications: ELISA

Host: Mouse

Recommended dilutions: ELISA: 1/10000. Optimal dilutions/concentrations should be determined by the end user.

Immunogen: Purified recombinant fragment of human CIDEDEC (AA: 53-141) expressed in E. coli.

Datasheet

Version: 5.0.0
Revision date: 17 Feb 2025



Isotype:	IgG ₁
Form:	Liquid
Purification:	Purified from ascites by Protein G chromatography.
Storage:	Aliquot and store at -20°C. Avoid repeated freeze/thaw cycles.
UniProt Primary AC:	Q96AQ7 (UniProt , ExPASy)
Gene Symbol:	CIDEC
GeneID:	63924
OMIM:	612120
HGNC:	24229
KEGG:	hsa:63924
Ensembl:	ENSG00000187288
String:	9606.ENSP00000373328
Molecular Weight:	26.8 kDa
Buffer:	PBS, containing 0.05% sodium azide.
Concentration:	1 mg/ml
Note:	This product is for research use only.

For Reference Only