

# P2X Purinoceptor 7 (CPV-VP2) Antibody

Catalogue No.: abx224341

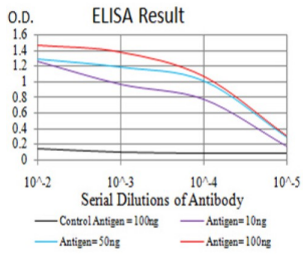
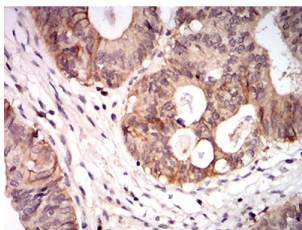
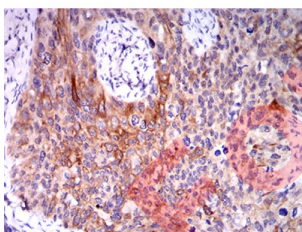
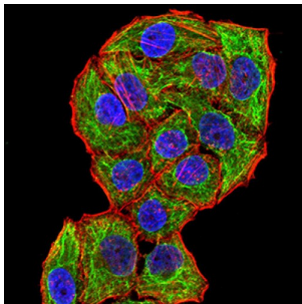
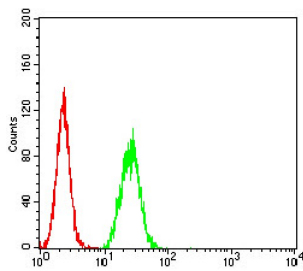


Fig. 1. Figure 1: Black line: Control Antigen (100 ng) Purple line: Antigen (10ng); Blue line: Antigen (50 ng); Red line: Antigen (100 ng)

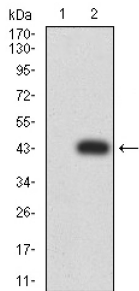
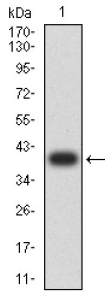
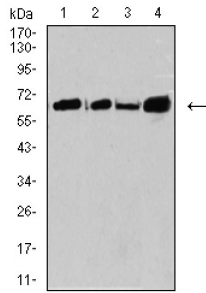


For Reference Only

# Datasheet

Version: 1.0.0

Revision date: 10 Apr 2025



CPV-VP2 Antibody is a Mouse Monoclonal against CPV-VP2.

**Target:** P2X Purinoceptor 7 (CPV-VP2)

**Clonality:** Monoclonal

**Reactivity:** Human

**Tested Applications:** ELISA, FCM

**Host:** Mouse

**Recommended dilutions:** ELISA: 1/10000, FCM: 1/200 - 1/400. Optimal dilutions/concentrations should be determined by the end user.

**Immunogen:** Purified recombinant fragment of Canine Parvovirus CPV-VP2 (AA: 1-128) expressed in E. coli.

**Isotype:** IgG<sub>1</sub>

# Datasheet

Version: 1.0.0  
Revision date: 10 Apr 2025



<b>Form:</b>	Liquid
<b>Purification:</b>	Purified from ascites by Protein G chromatography.
<b>Storage:</b>	Aliquot and store at -20°C. Avoid repeated freeze/thaw cycles.
<b>UniProt Primary AC:</b>	Q99572 ( <a href="#">UniProt</a> , <a href="#">ExPASy</a> )
<b>Gene Symbol:</b>	P2RX7
<b>GeneID:</b>	<a href="#">5027</a>
<b>OMIM:</b>	<a href="#">602566</a>
<b>HGNC:</b>	8537
<b>KEGG:</b>	hsa:5027
<b>Ensembl:</b>	ENSG00000089041
<b>String:</b>	<a href="#">9606.ENSP00000330696</a>
<b>Molecular Weight:</b>	68.6 kDa
<b>Buffer:</b>	PBS, containing 0.05% sodium azide.
<b>Concentration:</b>	1 mg/ml
<b>Note:</b>	THIS PRODUCT IS FOR RESEARCH USE ONLY. NOT FOR USE IN DIAGNOSTIC, THERAPEUTIC OR COSMETIC PROCEDURES. NOT FOR HUMAN OR ANIMAL CONSUMPTION.

For Reference Only