

# Anaphase-Promoting Complex Subunit 10 (ANAPC10) Antibody

Catalogue No.: abx224354

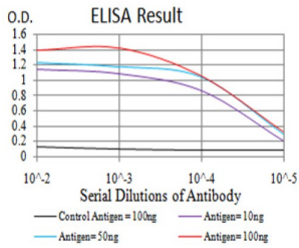
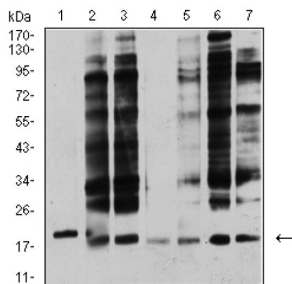
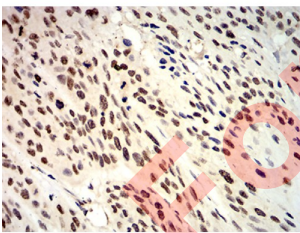
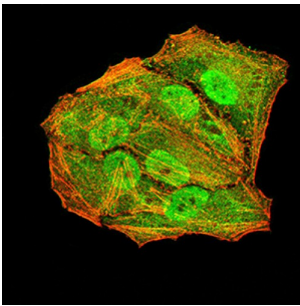
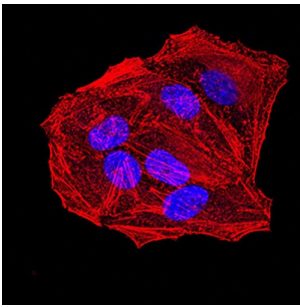
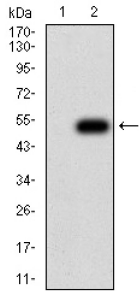
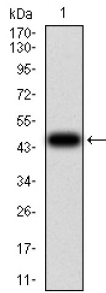


Fig. 1. Figure 1: Black line: Control Antigen (100 ng) Purple line: Antigen (10ng); Blue line: Antigen (50 ng); Red line: Antigen (100 ng)



# Datasheet

Version: 3.0.0  
Revision date: 14 Jan 2025



ANAPC10 Antibody is a Mouse Monoclonal against ANAPC10.

<b>Target:</b>	Anaphase-Promoting Complex Subunit 10 (ANAPC10)
<b>Clonality:</b>	Monoclonal
<b>Reactivity:</b>	Human, Mouse
<b>Tested Applications:</b>	ELISA, WB, IF/ICC, FCM
<b>Host:</b>	Mouse
<b>Recommended dilutions:</b>	ELISA: 1/10000, WB: 1/500 - 1/2000, IF/ICC: 1/200 - 1/1000, FCM: 1/200 - 1/400. Optimal dilutions/concentrations should be determined by the end user.
<b>Immunogen:</b>	Purified recombinant fragment of human ANAPC10 (AA: 1-185) expressed in E. coli.
<b>Isotype:</b>	IgG <sub>2a</sub>
<b>Form:</b>	Liquid
<b>Purification:</b>	Purified from ascites by Protein G chromatography.
<b>Storage:</b>	Aliquot and store at -20°C. Avoid repeated freeze/thaw cycles.
<b>UniProt Primary AC:</b>	O75874 ( <a href="#">UniProt</a> , <a href="#">ExpASY</a> )

# Datasheet

Version: 3.0.0  
Revision date: 14 Jan 2025

<b>Gene Symbol:</b>	IDH1
<b>GeneID:</b>	<a href="#">3417</a>
<b>OMIM:</b>	<a href="#">137800</a>
<b>HGNC:</b>	5382
<b>KEGG:</b>	hsa:3417
<b>Ensembl:</b>	ENSG00000138413
<b>String:</b>	<a href="#">9606.ENSP00000390265</a>
<b>Molecular Weight:</b>	46.7 kDa
<b>Buffer:</b>	PBS, containing 0.05% sodium azide.
<b>Concentration:</b>	1 mg/ml
<b>Note:</b>	This product is for research use only.

For Reference Only