

E3 Ubiquitin-Protein Ligase MIB1 (SAG2) Antibody

Catalogue No.: abx224359

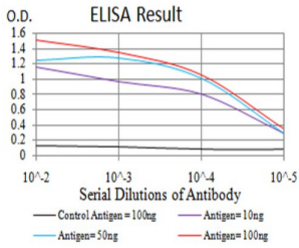
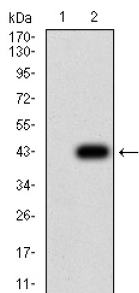
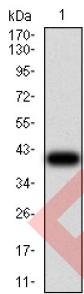
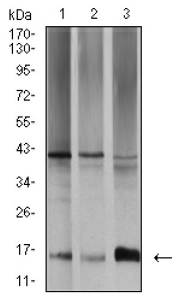
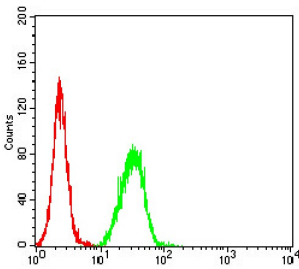


Fig. 1. Figure 1: Black line: Control Antigen (100 ng) Purple line: Antigen (10ng); Blue line: Antigen (50 ng); Red line: Antigen (100 ng)



Datasheet

Version: 2.0.0
Revision date: 24 Nov 2024



SAG2 Antibody is a Mouse Monoclonal against SAG2.

Target:	E3 Ubiquitin-Protein Ligase MIB1 (SAG2)
Clonality:	Monoclonal
Reactivity:	Human
Tested Applications:	ELISA, WB, IHC, FCM
Host:	Mouse
Recommended dilutions:	ELISA: 1/10000, WB: 1/500 - 1/2000, IHC: 1/200 - 1/1000, FCM: 1/200 - 1/400. Optimal dilutions/concentrations should be determined by the end user.
Immunogen:	Purified recombinant fragment of Toxoplasma gondii surface antigen 2B SAG2 (AA: 1-130) expressed in E. coli.
Isotype:	IgG ₁
Form:	Liquid
Purification:	Purified from ascites by Protein G chromatography.
Storage:	Aliquot and store at -20°C. Avoid repeated freeze/thaw cycles.
UniProt Primary AC:	Q86YT6 (UniProt , ExpASY)
Gene Symbol:	MIB1
GeneID:	57534
OMIM:	608677
HGNC:	21086
KEGG:	hsa:57534
Ensembl:	ENSG00000101752
String:	9606.ENSP00000261537
Molecular Weight:	110 kDa
Buffer:	PBS, containing 0.05% sodium azide.

Datasheet

Version: 2.0.0

Revision date: 24 Nov 2024



Concentration: 1 mg/ml

Note: This product is for research use only.

For Reference Only