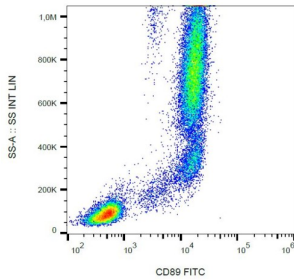
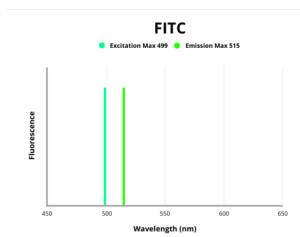


CD89 Antibody (FITC)

Catalogue No.: abx140413



Surface staining of CD89 in human peripheral blood with anti-CD89 FITC.



Fluorescence emission spectra of FITC.

CD89 Antibody (FITC) is a Mouse Monoclonal against CD89.

Target:	CD89
Clonality:	Monoclonal
Clone:	O385
Reactivity:	Human, Monkey
Tested Applications:	FCM
Host:	Mouse
Recommended dilutions:	FCM: 4 µl/100 µl of whole blood or 10 ⁶ cells. Optimal dilutions/concentrations should be determined by the end user. The content of a vial (0.4 ml) is sufficient for 100 tests.
Conjugation:	FITC
Excitation/Emission:	499/515
Laser Line:	488
Immunogen:	Ag8.653 myeloma cells.

Datasheet

Version: 3.0.0
Revision date: 12 Mar 2025



Isotype:	IgG ₁ , Kappa
Storage:	Store in the dark at 2-8°C. Avoid exposure to light. Do not freeze.
UniProt Primary AC:	P24071 (UniProt , ExPASy)
Gene Symbol:	FCAR
GeneID:	2204
KEGG:	hsa:2204
String:	9606.ENSP00000347714
Buffer:	Stabilizing PBS solution containing 15 mM sodium azide.
Specificity:	The mouse monoclonal antibody recognizes CD89, a 55-100 kDa glycoprotein serving as a receptor for IgA and expressed mainly on granulocytes, monocytes and macrophages.
Note:	THIS PRODUCT IS FOR RESEARCH USE ONLY. NOT FOR USE IN DIAGNOSTIC, THERAPEUTIC OR COSMETIC PROCEDURES. NOT FOR HUMAN OR ANIMAL CONSUMPTION.

For Reference Only