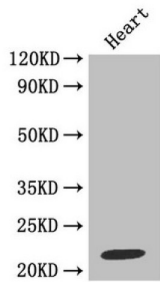


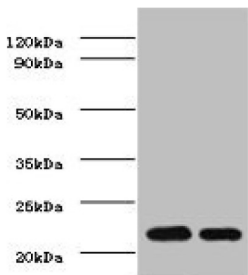
Metalloproteinase Inhibitor 1 (TIMP1) Antibody

Catalogue No.: abx210198

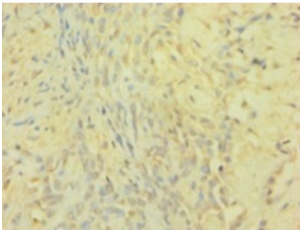


Western blot

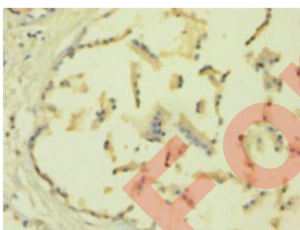
All lanes: Metalloproteinase inhibitor 1 antibody at 2 µg/ml
Lane 1: Jurkat whole cell lysate
Lane 2: MCF-7 whole cell lysate
Secondary Goat polyclonal to rabbit at 1/10000 dilution
Predicted band size: 23 kDa
Observed band size: 23 kDa.



Western Blot
Positive WB detected in: mouse heart
All lanes: TIMP1 antibody at 2 µg/ml
Secondary Goat polyclonal to rabbit IgG at 1/50000 dilution
Predicted band size: 23 kDa
Observed band size: 23 kDa.



Immunohistochemistry of paraffin-embedded human breast cancer using TIMP1 Antibody at a dilution of 1:100.



Immunohistochemistry of paraffin-embedded human placenta using TIMP1 Antibody at a dilution of 1:100.

TIMP1 Antibody is a Rabbit Polyclonal against TIMP1.

Target: Metalloproteinase Inhibitor 1 (TIMP1)

Clonality: Polyclonal

Reactivity: Human, Mouse

Datasheet

Version: 2.0.0
Revision date: 01 Sep 2024



Tested Applications:	ELISA, WB, IHC
Host:	Rabbit
Recommended dilutions:	WB: 1/1000 - 1/5000, IHC: 1/20 - 1/200. Optimal dilutions/concentrations should be determined by the end user.
Conjugation:	Unconjugated
Immunogen:	Recombinant human Metalloproteinase inhibitor 1 protein (24-207AA).
Isotype:	IgG
Form:	Liquid
Purity:	> 95%
Purification:	Purified by Protein G.
Storage:	Aliquot and store at -20°C. Avoid repeated freeze/thaw cycles.
UniProt Primary AC:	P01033 (UniProt , ExPASy)
Gene Symbol:	TIMP1
GeneID:	7076
HGNC:	11820
KEGG:	hsa:7076
String:	9606.ENSP00000218388
Buffer:	0.01 M PBS, pH 7.4, 0.03% Proclin-300 and 50% Glycerol.
Note:	This product is for research use only.