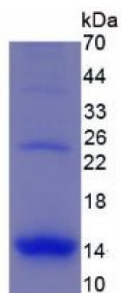
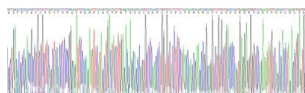


Human Macrophage Inflammatory Protein 1 Alpha (MIP1a) Protein (Active)

Catalogue No.: abx651409



Human Macrophage Inflammatory Protein 1 Alpha (MIP1a) Protein (Active)



Gene sequence extract of Human Macrophage Inflammatory Protein 1 Alpha (MIP1a) Protein (Active).

Macrophage Inflammatory Protein 1 Alpha (MIP1a) Protein (Active) is an active protein from Human.

Target: Macrophage Inflammatory Protein 1 Alpha (MIP1a)

Origin: Human

Tested Applications: WB, SDS-PAGE

Host: 293F cell

Conjugation: Unconjugated

Form: Lyophilized

Purity: > 95%

Reconstitution: To keep the original salt concentration, we recommend reconstituting to the original concentration prior to lyophilization (see Concentration) in ddH₂O. If a lower concentration is required, dilute in 20 mM Tris, 150 mM NaCl, pH 8.0. If a higher concentration is required, the product can be reconstituted directly in 20 mM Tris, 150 mM NaCl, pH 8.0, though please note that this will change the overall salt concentration. The stock concentration should be between 0.1-1.0 mg/ml. Do not vortex.

Datasheet

Version: 4.0.0

Revision date: 25 Mar 2025



Storage:	Store at 2-8 °C for up to one month. Store at -80 °C for up to one year. Avoid repeated freeze/thaw cycles.
UniProt Primary AC:	P10147 (UniProt , ExPASy)
KEGG:	hsa:6348
String:	9606.ENSP00000477908
Molecular Weight:	Calculated MW: 9.3 kDa Observed MW: 14 kDa
Sequence Fragment:	Ser24-Ala92
Tag:	N-terminal His tag
Buffer:	Prior to lyophilization: 20 mM Tris, 150 mM NaCl, pH 8.0, containing 1 mM EDTA, 1 mM DTT, 0.01% Sarcosyl, 5% Trehalose and Proclin-300.
Activity:	Active
Concentration:	Prior to lyophilization: 200 µg/ml
Note:	THIS PRODUCT IS FOR RESEARCH USE ONLY. NOT FOR USE IN DIAGNOSTIC, THERAPEUTIC OR COSMETIC PROCEDURES. NOT FOR HUMAN OR ANIMAL CONSUMPTION.