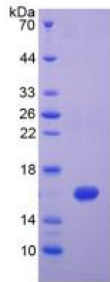


Human Interferon Gamma (IFN γ) Protein (Active)

Catalogue No.: abx651358

SDS-PAGE analysis of Human Interferon Gamma (IFN γ) Protein (Active).

Interferon Gamma (IFN γ) Protein (Active) is an active protein from Human.

Target: Interferon Gamma (IFN γ)**Origin:** Human**Tested Applications:** WB, SDS-PAGE**Host:** E. coli**Conjugation:** Unconjugated**Form:** Lyophilized**Purity:** > 95%**Reconstitution:** To keep the original salt concentration, we recommend reconstituting to the original concentration prior to lyophilization (see Concentration) in ddH₂O. If a lower concentration is required, dilute in 20 mM Tris, 150 mM NaCl, pH 8.0. If a higher concentration is required, the product can be reconstituted directly in 20 mM Tris, 150 mM NaCl, pH 8.0, though please note that this will change the overall salt concentration. The stock concentration should be between 0.1-1.0 mg/ml. Do not vortex.**Storage:** Store at 2-8 °C for up to one month. Store at -80 °C for up to one year. Avoid repeated freeze/thaw cycles.**UniProt Primary AC:** P01579 ([UniProt](#), [ExPASy](#))**KEGG:** hsa:3458**String:** [9606.ENSP00000229135](#)**Molecular Weight:** Calculated MW: 18.0 kDa
Observed MW: 16 kDa

Datasheet

Version: 1.0.0

Revision date: 05 Feb 2025



Sequence Fragment: Gln24-Gln166

Tag: N-terminal His tag

Buffer: Prior to lyophilization: 20 mM Tris, 150 mM NaCl, pH 8.0, containing 1 mM EDTA, 1 mM DTT, 0.01% Sarcosyl, 5% Trehalose and Proclin-300.

Activity: Active

Concentration: Prior to lyophilization: 200 µg/ml

Note: This product is for research use only.
Not for human consumption, cosmetic, therapeutic or diagnostic use.

For Reference Only