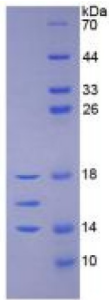
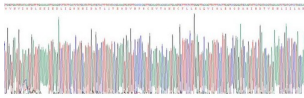


Human Interleukin 15 (IL15) Protein

Catalogue No.: abx651375



Human Interleukin 15 (IL15) Protein (Active)



Gene sequence extract of Human Interleukin 15 (IL15) Protein (Active).

Interleukin 15 (IL15) Protein (Active) is an active protein from Human.

Target: Interleukin 15 (IL15)

Origin: Human

Tested Applications: WB, SDS-PAGE

Conjugation: Unconjugated

Form: Lyophilized

Purity: > 97%

Reconstitution: To keep the original salt concentration, we recommend reconstituting to the original concentration prior to lyophilization (see Concentration) in ddH₂O. If a lower concentration is required, dilute in 20 mM Tris, 150 mM NaCl, pH 8.0. If a higher concentration is required, the product can be reconstituted directly in 20 mM Tris, 150 mM NaCl, pH 8.0, though please note that this will change the overall salt concentration. The stock concentration should be between 0.1-1.0 mg/ml. Do not vortex.

Storage: Store at 2-8 °C for up to one month. Store at -80 °C for up to one year. Avoid repeated freeze/thaw cycles.

UniProt Primary AC: P40933 ([UniProt](#), [ExpASY](#))

Datasheet

Version: 3.0.0
Revision date: 20 Jan 2025



KEGG: hsa:3600

String: [9606.ENSP00000296545](#)

Molecular Weight: Calculated MW: 14 kDa
Observed MW: 14 kDa, 16 kDa, 18 kDa

Sequence Fragment: Trp50-Ser162

Tag: N-terminal His tag

Buffer: Prior to lyophilization: 20 mM Tris, 150 mM NaCl, pH 8.0, containing 1 mM EDTA, 1 mM DTT, 0.01% Sarcosyl, 5% Trehalose and Proclin-300.

Activity: Active

Concentration: Prior to lyophilization: 200 µg/ml

Note: This product is for research use only.
Not for human consumption, cosmetic, therapeutic or diagnostic use.

For Reference Only