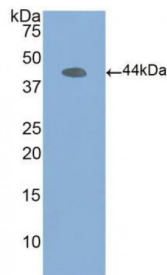


Datasheet

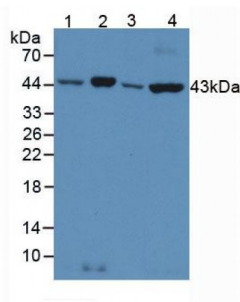
Version: 1.0.0
Revision date: 23 Sep 2023

Beta Actin (ACTB) Antibody

Catalogue No.: abx132249



WB analysis of recombinant Human ACTB, using ACTB antibody.



WB analysis of (1) Human Liver Tissue, (2) Human Lung Tissue, (3) Human K562 Cells, and (4) Mouse Lung Tissue, using ACTB antibody (3 µg/ml) and HRP-conjugated Guinea pig Anti-Rabbit antibody ([abx400003](#), 1:2000 dilution).

Actin Beta (ACTB) Antibody is a Rabbit Polyclonal against Actin Beta (ACTB). This product is intended for use as a loading control in Western Blotting.

Target:	Beta Actin (ACTB)
Clonality:	Polyclonal
Reactivity:	Human, Mouse, Rat, Cow, Chicken, Horse, Pig, Dog, Sheep, Guinea pig
Tested Applications:	WB
Host:	Rabbit
Recommended dilutions:	WB: 0.5-5 µg/ml. Optimal dilutions/concentrations should be determined by the end user.
Conjugation:	Unconjugated
Form:	Liquid
Purification:	Purified by antigen-specific affinity chromatography, followed by Protein A affinity chromatography.
Storage:	Aliquot and store at -20°C. Avoid repeated freeze/thaw cycles.

Datasheet

Version: 1.0.0
Revision date: 23 Sep 2023



Buffer: 0.01 M PBS, pH 7.4, containing 0.05% Proclin-300, 50% glycerol.

Note: This product is for research use only.

For Reference Only