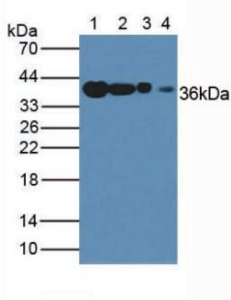
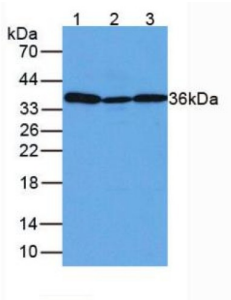


Glyceraldehyde-3-Phosphate Dehydrogenase (GAPDH) Antibody

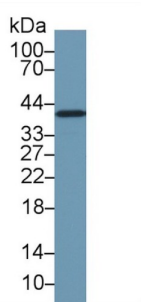
Catalogue No.: abx132248



Western blot analysis of Lane 1: Human Liver Tissue, Lane 2: Human Lung Tissue, Lane 3: Human Cartilage Tissue, Lane 4: Human Lymphocytes.



Western blot analysis of Lane 1: Human Liver Tissue, Lane 2: Mouse Lung Tissue, Lane 3: Mouse Placenta.



Western Blot analysis of Recombinant Human GAPDH.

Glyceraldehyde-3-Phosphate Dehydrogenase (GAPDH) Antibody is a Rabbit Polyclonal against Glyceraldehyde-3-Phosphate Dehydrogenase (GAPDH).

Target: Glyceraldehyde-3-Phosphate Dehydrogenase (GAPDH)

Clonality: Polyclonal

Reactivity: Human

Tested Applications: WB

Host: Rabbit

Recommended dilutions: WB: 0.5-2 µg/ml. Optimal dilutions/concentrations should be determined by the end user.

Datasheet

Version: 1.0.0
Revision date: 05 Dec 2024



Conjugation:	Unconjugated
Immunogen:	abx066862 - Recombinant GAPDH (Gly2-Ser148) expressed in E.coli.
Form:	Liquid
Purification:	Purified by antigen-specific affinity chromatography, followed by Protein A affinity chromatography.
Storage:	Aliquot and store at -20°C. Avoid repeated freeze/thaw cycles.
UniProt Primary AC:	P04406 (UniProt , ExPASy)
KEGG:	hsa:2597
String:	9606.ENSP00000229239
Buffer:	0.01 M PBS, pH 7.4, containing 0.05% Proclin-300, 50% glycerol.
Note:	This product is for research use only.

For Reference Only