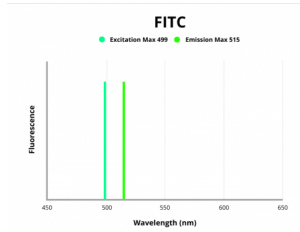


Ubiquitin Carboxyl Terminal Hydrolase L1 (UCHL1) Antibody (FITC)

Catalogue No.: abx270334



Fluorescence emission spectra of FITC.

Ubiquitin Carboxyl Terminal Hydrolase L1 (UCHL1) Antibody (FITC) is a Mouse Monoclonal Antibody conjugated to FITC against Ubiquitin Carboxyl Terminal Hydrolase L1 (UCHL1) for use in flow cytometry.

Target:	Ubiquitin Carboxyl Terminal Hydrolase L1 (UCHL1)
Clonality:	Monoclonal
Reactivity:	Human
Tested Applications:	FCM
Host:	Mouse
Recommended dilutions:	FCM: 1-5 μ l/10 ⁶ cells. Optimal dilutions/concentrations should be determined by the end user.
Conjugation:	FITC
Excitation/Emission:	499/515
Laser Line:	488
Isotype:	IgG
Form:	Liquid
Purification:	Purified by Protein A and Protein G affinity chromatography.
Storage:	Aliquot and store at -20°C. Avoid exposure to light. Avoid repeated freeze/thaw cycles.
Buffer:	0.01 M PBS, pH 7.4, containing 0.05% Proclin-300, 50% glycerol.

Datasheet

Version: 1.0.0

Revision date: 16 Jul 2024



Note: This product is for research use only.

For Reference Only