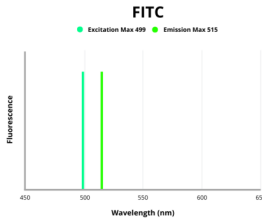


Leukocyte Immunoglobulin Like Receptor Subfamily B, Member 3 (LILRB3) Antibody (FITC)

Catalogue No.: abx270495



Fluorescence emission spectra of FITC.

Leukocyte Immunoglobulin Like Receptor Subfamily B, Member 3 (LILRB3) Antibody (FITC) is a Rabbit Polyclonal Antibody conjugated to FITC against Leukocyte Immunoglobulin Like Receptor Subfamily B, Member 3 (LILRB3) for use in flow cytometry.

Target:	Leukocyte Immunoglobulin Like Receptor Subfamily B, Member 3 (LILRB3)
Clonality:	Polyclonal
Reactivity:	Mouse
Tested Applications:	FCM
Host:	Rabbit
Recommended dilutions:	FCM: 1-5 μ l/10 ⁶ cells. Optimal dilutions/concentrations should be determined by the end user.
Conjugation:	FITC
Excitation/Emission:	499/515
Laser Line:	488
Isotype:	IgG
Form:	Liquid
Purification:	Purified by antigen-specific affinity chromatography.
Storage:	Aliquot and store at -20°C. Avoid exposure to light. Avoid repeated freeze/thaw cycles.

Datasheet

Version: 1.0.0

Revision date: 01 Feb 2025



Buffer: 0.01 M PBS, pH 7.4, containing 0.05% Proclin-300, 50% glycerol.

Note: This product is for research use only.

For Reference Only