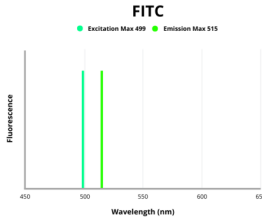


## Corticosteroid Binding Globulin (SERPINA6) Antibody (FITC)

Catalogue No.: abx270511



Fluorescence emission spectra of FITC.

Corticosteroid Binding Globulin (SERPINA6) Antibody (FITC) is a Mouse Monoclonal Antibody conjugated to FITC against Corticosteroid Binding Globulin (SERPINA6) for use in flow cytometry.

<b>Target:</b>	Corticosteroid Binding Globulin (SERPINA6)
<b>Clonality:</b>	Monoclonal
<b>Reactivity:</b>	Rat
<b>Tested Applications:</b>	FCM
<b>Host:</b>	Mouse
<b>Recommended dilutions:</b>	FCM: 1-5 $\mu\text{l}/10^6$ cells. Optimal dilutions/concentrations should be determined by the end user.
<b>Conjugation:</b>	FITC
<b>Excitation/Emission:</b>	499/515
<b>Laser Line:</b>	488
<b>Isotype:</b>	IgG
<b>Form:</b>	Liquid
<b>Purification:</b>	Purified by Protein A and Protein G affinity chromatography.
<b>Storage:</b>	Aliquot and store at $-20^{\circ}\text{C}$ . Avoid exposure to light. Avoid repeated freeze/thaw cycles.
<b>Buffer:</b>	0.01 M PBS, pH 7.4, containing 0.05% Proclin-300, 50% glycerol.

# Datasheet

Version: 1.0.0

Revision date: 25 Jan 2025



**Note:** This product is for research use only.

For Reference Only