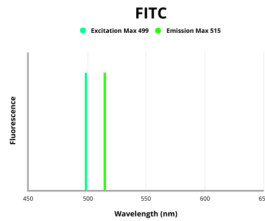


Toll Like Receptor 3 (TLR3) Antibody (FITC)

Catalogue No.: abx273661



Fluorescence emission spectra of FITC.

Toll Like Receptor 3 (TLR3) Antibody (FITC) is a Rabbit Polyclonal antibody conjugated to FITC against Toll Like Receptor 3 (TLR3).

Target: Toll Like Receptor 3 (TLR3)

Clonality: Polyclonal

Reactivity: Human

Tested Applications: WB, IHC, IF/ICC

Host: Rabbit

Recommended dilutions: WB: 0.5-2 µg/ml, IHC: 5-20 µg/ml, IF/ICC: 5-20 µg/ml. Optimal dilutions/concentrations should be determined by the end user.

Conjugation: FITC

Excitation/Emission: 499/515

Laser Line: 488

Isotype: IgG

Form: Liquid

Purification: Purified by antigen-specific affinity chromatography.

Storage: Aliquot and store at -20°C. Avoid exposure to light. Avoid repeated freeze/thaw cycles.

Buffer: 0.01 M PBS, pH 7.4, containing 0.05% Proclin-300, 50% glycerol.

Datasheet

Version: 1.0.0

Revision date: 21 Nov 2024



Note: This product is for research use only.

For Reference Only