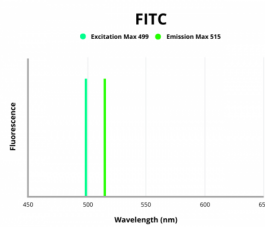


Vascular Endothelial Growth Factor Receptor 1 / VEGFR1 (FLT1) Antibody (FITC)

Catalogue No.: abx273676



Fluorescence emission spectra of FITC.

Vascular Endothelial Growth Factor Receptor 1 / VEGFR1 (FLT1) Antibody (FITC) is a Rabbit Polyclonal antibody conjugated to FITC against Vascular Endothelial Growth Factor Receptor 1 / VEGFR1 (FLT1).

Target:	Vascular Endothelial Growth Factor Receptor 1 / VEGFR1 (FLT1)
Clonality:	Polyclonal
Reactivity:	Human
Tested Applications:	WB, IHC, IF/ICC
Host:	Rabbit
Recommended dilutions:	WB: 0.5-2 µg/ml, IHC: 5-20 µg/ml, IF/ICC: 5-20 µg/ml. Optimal dilutions/concentrations should be determined by the end user.
Conjugation:	FITC
Excitation/Emission:	499/515
Laser Line:	488
Isotype:	IgG
Form:	Liquid
Purification:	Purified by antigen-specific affinity chromatography.
Storage:	Aliquot and store at -20°C. Avoid exposure to light. Avoid repeated freeze/thaw cycles.
Buffer:	0.01 M PBS, pH 7.4, containing 0.05% Proclin-300, 50% glycerol.

Datasheet

Version: 1.0.0

Revision date: 21 Sep 2023



Note: This product is for research use only.

For Reference Only