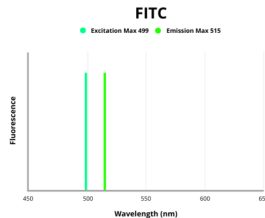


## Serum Amyloid A-1 Protein (SAA1) Antibody (FITC)

Catalogue No.: abx274059



Fluorescence emission spectra of FITC.

Serum Amyloid A-1 Protein (SAA1) Antibody (FITC) is a Guinea pig Polyclonal antibody conjugated to FITC against Serum Amyloid A-1 Protein (SAA1).

<b>Target:</b>	Serum Amyloid A-1 Protein (SAA1)
<b>Clonality:</b>	Polyclonal
<b>Reactivity:</b>	Rabbit
<b>Tested Applications:</b>	WB, IHC, IF/ICC
<b>Host:</b>	Guinea pig
<b>Recommended dilutions:</b>	WB: 0.5-2 µg/ml, IHC: 5-20 µg/ml, IF/ICC: 5-20 µg/ml. Optimal dilutions/concentrations should be determined by the end user.
<b>Conjugation:</b>	FITC
<b>Excitation/Emission:</b>	499/515
<b>Laser Line:</b>	488
<b>Isotype:</b>	IgG
<b>Form:</b>	Liquid
<b>Purification:</b>	Purified by antigen-specific affinity chromatography.
<b>Storage:</b>	Aliquot and store at -20°C. Avoid exposure to light. Avoid repeated freeze/thaw cycles.
<b>UniProt Primary AC:</b>	P53614 ( <a href="#">UniProt</a> , <a href="#">ExpASY</a> )

# Datasheet

Version: 1.0.0  
Revision date: 03 Feb 2025



**Gene Symbol:** SAA1

**GeneID:** [100009168](#)

**KEGG:** ocu:100009168

**String:** [9986.ENSOCUP00000017760](#)

**Buffer:** 0.01 M PBS, pH 7.4, containing 0.05% Proclin-300, 50% glycerol.

**Note:** This product is for research use only.

For Reference Only