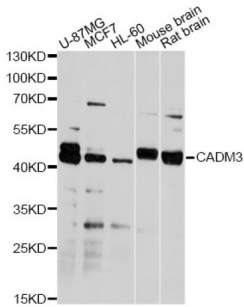


Cell Adhesion Molecule 3 (CADM3) Antibody

Catalogue No.: abx003725



Western blot analysis of extracts of various cell lines, using CADM3 antibody (abx003725) at 1/2000 dilution.

CADM3 Antibody is a Rabbit Polyclonal antibody against CADM3. IGSF4B is a brain-specific protein related to the calcium-independent cell-cell adhesion molecules known as nectins (see PVRL3; MIM 607147) (Kakunaga et al., 2005).

Target:	Cell Adhesion Molecule 3 (CADM3)
Clonality:	Polyclonal
Reactivity:	Human, Mouse, Rat
Tested Applications:	WB
Host:	Rabbit
Recommended dilutions:	WB: 1/500 - 1/2000. Optimal dilutions/concentrations should be determined by the end user.
Conjugation:	Unconjugated
Immunogen:	Recombinant fusion protein containing a sequence corresponding to amino acids 25-330 of human CADM3.
Isotype:	IgG
Form:	Liquid
Purification:	Purified by affinity chromatography.
Storage:	Aliquot and store at -20°C. Avoid repeated freeze/thaw cycles.
UniProt Primary AC:	Q8N126 (UniProt , ExPASy)
Gene Symbol:	CADM3

Datasheet

Version: 3.0.0
Revision date: 23 Dec 2024



GeneID: [57863](#)

NCBI Accession: NP_001120645.1

KEGG: hsa:57863

String: [9606.ENSP00000357106](#)

Molecular Weight: Calculated MW: 43 kDa
Observed MW: 43 kDa

Buffer: PBS, pH 7.3, containing 0.02% sodium azide, 50% glycerol.

Concentration: > 0.2 mg/ml

Note: This product is for research use only.

For Reference Only