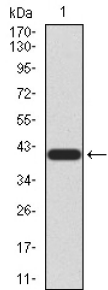
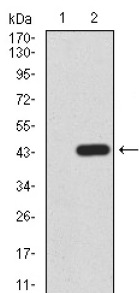


Prolow-Density Lipoprotein Receptor-Related Protein 1 (LRP1) Antibody

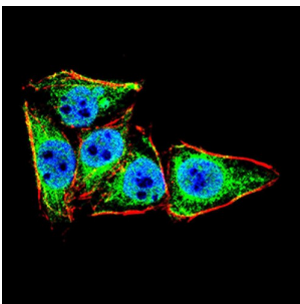
Catalogue No.: abx016178



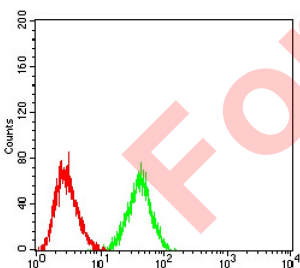
WB analysis of recombinant Human LRP1 (20-155 AA). Predicted MW: 40.8 kDa.



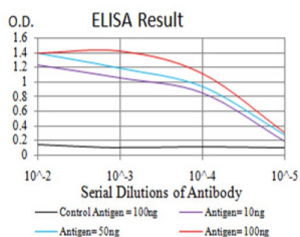
WB analysis of (1) non-transfected, and (2) LRP1 (20-155 AA)-hlgGfC transfected HEK293 cell lysates.



IF analysis of HeLa cells, using LRP1 antibody (green). Blue: DRAQ5 fluorescent DNA dye. Red: Actin filaments labelled with AF555 phalloidin.



Flow cytometry analysis of Raji cells, using LRP1 antibody (green) and negative control (red).



ELISA analysis. Black line: Control Antigen (100 ng), Purple line: Antigen(10 ng), Blue line: Antigen (50 ng), Red line: Antigen (100 ng).

Datasheet

Version: 4.0.0
Revision date: 03 Feb 2025



LRP1 Antibody is a Mouse Monoclonal against LRP1.

Target:	Prolow-Density Lipoprotein Receptor-Related Protein 1 (LRP1)
Clonality:	Monoclonal
Reactivity:	Human
Tested Applications:	ELISA, IF/ICC, FCM
Host:	Mouse
Recommended dilutions:	ELISA: 1/10000, IF/ICC: 1/200 - 1/1000, FCM: 1/200 - 1/400. Optimal dilutions/concentrations should be determined by the end user.
Conjugation:	Unconjugated
Immunogen:	Purified recombinant fragment of human LRP1 (20-155 AA) expressed in E. coli.
Isotype:	IgG ₁
Form:	Liquid
Purification:	Purified from ascites by Protein G chromatography.
Storage:	Aliquot and store at -20°C. Avoid repeated freeze/thaw cycles.
UniProt Primary AC:	Q07954 (UniProt , ExpASY)
Gene Symbol:	LRP1
GeneID:	4035
OMIM:	107770
HGNC:	6692
KEGG:	hsa:4035
Ensembl:	ENSG00000123384
String:	9606.ENSP00000243077
Molecular Weight:	504 kDa

Datasheet

Version: 4.0.0
Revision date: 03 Feb 2025



Buffer: PBS, containing 0.05% sodium azide.

Concentration: 1 mg/ml

Note: This product is for research use only.

For Reference Only