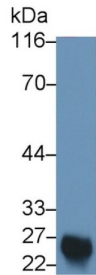
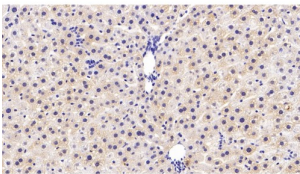


Catechol-O-Methyltransferase (COMT) Antibody

Catalogue No.: abx171621



Western blot analysis of Rat Liver lysate, using Mouse Anti-Rat COMT Antibody (0.2 µg/ml) and HRP-conjugated Goat Anti-Mouse antibody ([abx400001](#), 0.2 µg/ml).



IHC-P analysis of Rat Liver Tissue, with DAB staining, using Mouse Anti-Rat COMT Antibody (30 µg/ml) and HRP-conjugated Goat Anti-Mouse antibody ([abx400001](#), 2 µg/ml).

Catechol-O-Methyltransferase (COMT) Antibody is a Mouse Monoclonal antibody against Catechol-O-Methyltransferase (COMT).

Target: Catechol-O-Methyltransferase (COMT)

Clonality: Monoclonal

Reactivity: Rat

Tested Applications: WB, IHC, IF/ICC

Host: Mouse

Recommended dilutions: WB: 0.5-2 µg/ml, IHC: 5-20 µg/ml, IF/ICC: 5-20 µg/ml. Optimal dilutions/concentrations should be determined by the end user.

Conjugation: Unconjugated

Immunogen: [abx065793](#) - Recombinant Catechol-O-Methyltransferase (COMT)

Isotype: IgG₁ Kappa

Form: Liquid

Datasheet

Version: 2.0.0
Revision date: 23 Nov 2024



- Purification:** Purified by Protein A and Protein G affinity chromatography.
- Storage:** Aliquot and store at -20°C. Avoid repeated freeze/thaw cycles.
- Buffer:** 0.01 M PBS, pH 7.4, containing 0.05% Proclin-300, 50% glycerol.
- Note:** This product is for research use only.

For Reference Only