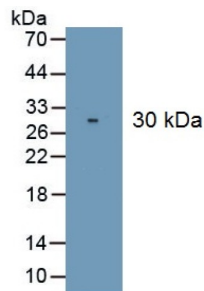


## Cluster of Differentiation 226 (CD226) Antibody

Catalogue No.: abx171784



Cluster Of Differentiation 226 (CD226) Antibody is a Mouse Monoclonal antibody against Cluster Of Differentiation 226 (CD226).

<b>Target:</b>	Cluster of Differentiation 226 (CD226)
<b>Clonality:</b>	Monoclonal
<b>Clone:</b>	M560
<b>Reactivity:</b>	Human
<b>Tested Applications:</b>	WB, IHC, IF/ICC
<b>Host:</b>	Mouse
<b>Recommended dilutions:</b>	WB: 0.01-2 µg/ml, IHC: 5-20 µg/ml, IF/ICC: 5-20 µg/ml. Optimal dilutions/concentrations should be determined by the end user.
<b>Conjugation:</b>	Unconjugated
<b>Immunogen:</b>	<a href="#">abx167145</a> - Recombinant CD226 (Glu19-Ala254) expressed in E. coli
<b>Isotype:</b>	IgG <sub>1</sub> , Kappa
<b>Form:</b>	Liquid
<b>Purification:</b>	Purified by Protein A and Protein G affinity chromatography.
<b>Storage:</b>	Aliquot and store at -20°C. Avoid repeated freeze/thaw cycles.
<b>Buffer:</b>	0.01 M PBS, pH 7.4, containing 0.05% Proclin-300, 50% glycerol.
<b>Note:</b>	This product is for research use only.