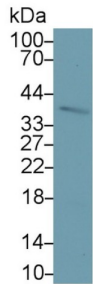


Epithelial Cell Adhesion Molecule (EPCAM) Antibody

Catalogue No.: abx172278



Western blot analysis of Pig Kidney lysate, using Mouse Anti-Human EPCAM Antibody (2 µg/ml) and HRP-conjugated Goat Anti-Mouse antibody ([abx400001](#), 0.2 µg/ml).

Epithelial Cell Adhesion Molecule (EPCAM) Antibody is a Mouse Monoclonal antibody against Epithelial Cell Adhesion Molecule (EPCAM).

Target:	Epithelial Cell Adhesion Molecule (EPCAM)
Clonality:	Monoclonal
Reactivity:	Human
Tested Applications:	WB, IHC, IF/ICC
Host:	Mouse
Recommended dilutions:	WB: 0.01-2 µg/ml, IHC: 5-20 µg/ml, IF/ICC: 5-20 µg/ml. Optimal dilutions/concentrations should be determined by the end user.
Conjugation:	Unconjugated
Immunogen:	abx652155 - Recombinant Epithelial Cell Adhesion Molecule (EPCAM)
Isotype:	IgG ₁ Kappa
Form:	Liquid
Purification:	Purified by Protein A and Protein G affinity chromatography.
Storage:	Aliquot and store at -20°C. Avoid repeated freeze/thaw cycles.
Buffer:	0.01 M PBS, pH 7.4, containing 0.05% Proclin-300, 50% glycerol.
Note:	THIS PRODUCT IS FOR RESEARCH USE ONLY. NOT FOR USE IN DIAGNOSTIC, THERAPEUTIC OR COSMETIC PROCEDURES. NOT FOR HUMAN OR ANIMAL CONSUMPTION.