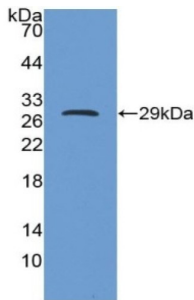
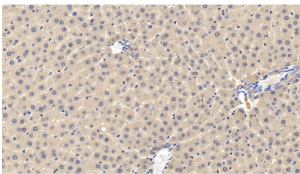


## Insulin Like Growth Factor Binding Protein 5 (IGFBP5) Antibody

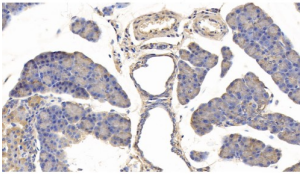
Catalogue No.: abx172935



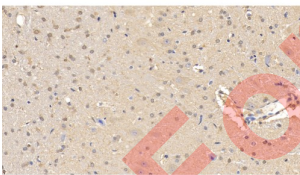
Western blot analysis of recombinant Rat IGFBP5.



IHC-P analysis of Rat Liver Tissue, with DAB staining, using Mouse Anti-Rat IGFBP5 Antibody (20 µg/ml) and HRP-conjugated Goat Anti-Mouse antibody ([abx400001](#), 2 µg/ml).



IHC-P analysis of Rat Pancreas Tissue, with DAB staining, using Mouse Anti-Rat IGFBP5 Antibody (20 µg/ml) and HRP-conjugated Goat Anti-Mouse antibody ([abx400001](#), 2 µg/ml).



IHC-P analysis of Rat Cerebellum Tissue, with DAB staining, using Mouse Anti-Rat IGFBP5 Antibody (20 µg/ml) and HRP-conjugated Goat Anti-Mouse antibody ([abx400001](#), 2 µg/ml).

Insulin Like Growth Factor Binding Protein 5 (IGFBP5) Antibody is a Mouse Monoclonal antibody against Insulin Like Growth Factor Binding Protein 5 (IGFBP5).

**Target:** Insulin Like Growth Factor Binding Protein 5 (IGFBP5)

**Clonality:** Monoclonal

# Datasheet

Version: 2.0.0  
Revision date: 13 Mar 2025



<b>Clone:</b>	G934
<b>Reactivity:</b>	Rat
<b>Tested Applications:</b>	WB, IHC, IF/ICC
<b>Host:</b>	Mouse
<b>Recommended dilutions:</b>	WB: 0.01-2 µg/ml, IHC: 5-20 µg/ml, IF/ICC: 5-20 µg/ml. Optimal dilutions/concentrations should be determined by the end user.
<b>Conjugation:</b>	Unconjugated
<b>Immunogen:</b>	<a href="#">abx067256</a> - Recombinant IGFBP5 (His25-Glu271) expressed in E. coli
<b>Isotype:</b>	IgG <sub>2b</sub> Kappa
<b>Form:</b>	Liquid
<b>Purification:</b>	Purified by Protein A and Protein G affinity chromatography.
<b>Storage:</b>	Aliquot and store at -20°C. Avoid repeated freeze/thaw cycles.
<b>UniProt Primary AC:</b>	P24594 ( <a href="#">UniProt</a> , <a href="#">ExPASy</a> )
<b>KEGG:</b>	rno:25285
<b>String:</b>	<a href="#">10116.ENSRNOP00000023530</a>
<b>Buffer:</b>	0.01 M PBS, pH 7.4, containing 0.05% Proclin-300, 50% glycerol.
<b>Specificity:</b>	Cross-reacts with Human and Rat IGFBP5.
<b>Concentration:</b>	1 mg/ml
<b>Note:</b>	THIS PRODUCT IS FOR RESEARCH USE ONLY. NOT FOR USE IN DIAGNOSTIC, THERAPEUTIC OR COSMETIC PROCEDURES. NOT FOR HUMAN OR ANIMAL CONSUMPTION.