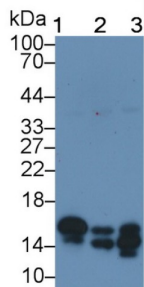
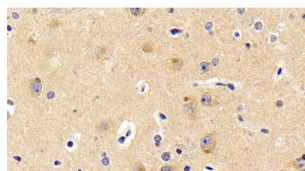


Microtubule Associated Protein 1 Light Chain 3 Alpha (MAP1LC3a) Antibody

Catalogue No.: abx173568



Western blot analysis of (1) Pig Cerebrum lysate, (2) Rat Cerebrum lysate, (3) Mouse Cerebrum lysate, using Mouse Anti-Human MAP1LC3a Antibody (2 µg/ml) and HRP-conjugated Goat Anti-Mouse antibody ([abx400001](#), 0.2 µg/ml).



IHC-P analysis of Human Cerebrum Tissue, with DAB staining, using Mouse Anti-Human MAP1LC3a Antibody (20 µg/ml) and HRP-conjugated Goat Anti-Mouse antibody ([abx400001](#), 2 µg/ml).

Microtubule Associated Protein 1 Light Chain 3 Alpha (MAP1LC3a) Antibody is a Mouse Monoclonal antibody against Microtubule Associated Protein 1 Light Chain 3 Alpha (MAP1LC3a).

Target: Microtubule Associated Protein 1 Light Chain 3 Alpha (MAP1LC3a)

Clonality: Monoclonal

Reactivity: Human

Tested Applications: WB, IHC, IF/ICC

Host: Mouse

Recommended dilutions: WB: 0.01-2 µg/ml, IHC: 5-20 µg/ml, IF/ICC: 5-20 µg/ml. Optimal dilutions/concentrations should be determined by the end user.

Conjugation: Unconjugated

Immunogen: [abx650799](#) - Recombinant Microtubule Associated Protein 1 Light Chain 3 Alpha (MAP1LC3a)

Isotype: IgG_{2b} Kappa

Form: Liquid

Datasheet

Version: 1.0.0
Revision date: 16 Feb 2025



- Purification:** Purified by Protein A and Protein G affinity chromatography.
- Storage:** Aliquot and store at -20°C. Avoid repeated freeze/thaw cycles.
- Buffer:** 0.01 M PBS, pH 7.4, containing 0.05% Proclin-300, 50% glycerol.
- Note:** This product is for research use only.

For Reference Only