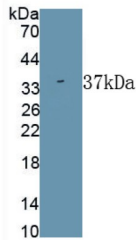


## Alkaline Phosphatase, Tissue-Nonspecific Isozyme (ALPL) Antibody

Catalogue No.: abx175321



Western blot analysis of recombinant Rat ALPL.

Alkaline Phosphatase, Liver/Bone/Kidney (ALPL) Antibody is a Rabbit Polyclonal antibody against Alkaline Phosphatase, Liver/Bone/Kidney (ALPL).

<b>Target:</b>	Alkaline Phosphatase, Tissue-Nonspecific Isozyme (ALPL)
<b>Clonality:</b>	Polyclonal
<b>Reactivity:</b>	Rat
<b>Tested Applications:</b>	WB, IHC, IF/ICC
<b>Host:</b>	Rabbit
<b>Recommended dilutions:</b>	WB: 0.01-2 µg/ml, IHC: 5-20 µg/ml, IF/ICC: 5-20 µg/ml. Optimal dilutions/concentrations should be determined by the end user.
<b>Conjugation:</b>	Unconjugated
<b>Immunogen:</b>	<a href="#">abx652457</a> - Recombinant Alkaline Phosphatase, Tissue-nonspecific (ALPL)
<b>Form:</b>	Liquid
<b>Purification:</b>	Purified by antigen-specific affinity chromatography, followed by Protein A affinity chromatography.
<b>Storage:</b>	Aliquot and store at -20°C. Avoid repeated freeze/thaw cycles.
<b>Buffer:</b>	0.01 M PBS, pH 7.4, containing 0.05% Proclin-300, 50% glycerol.
<b>Note:</b>	This product is for research use only.