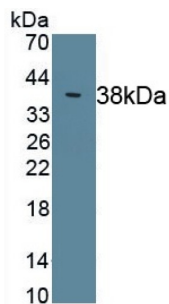


Complement C4 (C4) Antibody

Catalogue No.: abx175977



Western blot analysis of recombinant Rat C4 Protein.

Complement C4 (C4) Antibody is a Rabbit Polyclonal antibody against Complement C4 (C4).

Target:	Complement C4 (C4)
Clonality:	Polyclonal
Reactivity:	Rat
Tested Applications:	WB, IHC, IF/ICC
Host:	Rabbit
Recommended dilutions:	WB: 0.01-2 µg/ml, IHC: 5-20 µg/ml, IF/ICC: 5-20 µg/ml. Optimal dilutions/concentrations should be determined by the end user.
Conjugation:	Unconjugated
Immunogen:	Recombinant Complement Component 4 (Pro1419-Val1737) expressed in E. coli
Form:	Liquid
Purification:	Purified by antigen-specific affinity chromatography, followed by Protein A affinity chromatography.
Storage:	Aliquot and store at -20°C. Avoid repeated freeze/thaw cycles.
Buffer:	M PBS, pH 7.4, containing 0.02% NaN ₃ , 50% glycerol.
Concentration:	0.5 mg/ml
Note:	This product is for research use only.