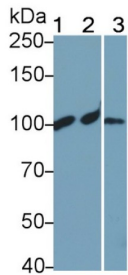


# Datasheet

Version: 2.0.0  
Revision date: 10 Feb 2025

## Complement Fragment C4a (C4a) Antibody

Catalogue No.: abx175979



Western blot analysis of (1) Rat Serum, (2) Rat Plasma, and (3) Mouse Serum, using Rabbit Anti-Rat C4a Antibody (0.2 µg/ml) and HRP-conjugated Goat Anti-Rabbit antibody ([abx400043](#), 0.2 µg/ml).

Complement Fragment C4a (C4a) Antibody is a Rabbit Polyclonal antibody against Complement Fragment C4a (C4a).

<b>Target:</b>	Complement Fragment C4a (C4a)
<b>Clonality:</b>	Polyclonal
<b>Reactivity:</b>	Rat
<b>Tested Applications:</b>	WB
<b>Host:</b>	Rabbit
<b>Recommended dilutions:</b>	WB: 0.01-2 µg/ml. Optimal dilutions/concentrations should be determined by the end user.
<b>Conjugation:</b>	Unconjugated
<b>Immunogen:</b>	<a href="#">abx653025</a> - Recombinant Complement Component 4a (Asn678-Arg753) expressed in E. coli
<b>Form:</b>	Liquid
<b>Purification:</b>	Purified by antigen-specific affinity chromatography, followed by Protein A affinity chromatography.
<b>Storage:</b>	Aliquot and store at -20°C. Avoid repeated freeze/thaw cycles.
<b>Buffer:</b>	0.01 M PBS, pH 7.4, containing 0.05% Proclin-300, 50% glycerol.
<b>Specificity:</b>	Cross-reacts with Mouse C4a.
<b>Concentration:</b>	1 mg/ml
<b>Note:</b>	This product is for research use only.