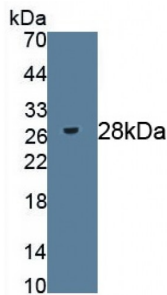


# Datasheet

Version: 4.0.0  
Revision date: 28 Jul 2023

## Heparan Sulfate Proteoglycan 2 (HSPG2) Antibody

Catalogue No.: abx176806



Western blot analysis of recombinant Mouse HSPG2 Protein.

Heparan Sulfate Proteoglycan 2 (HSPG2) Antibody is a Rabbit Polyclonal antibody against Heparan Sulfate Proteoglycan 2 (HSPG2).

|                               |  |
|-------------------------------|--|
| <b>Target:</b>                | Heparan Sulfate Proteoglycan 2 (HSPG2)   |
| <b>Clonality:</b>             | Polyclonal   |
| <b>Reactivity:</b>            | Mouse  |
| <b>Tested Applications:</b>   | WB, IHC, IF/ICC  |
| <b>Host:</b>                  | Rabbit   |
| <b>Recommended dilutions:</b> | WB: 0.5-2 µg/ml, IHC: 5-20 µg/ml, IF/ICC: 5-20 µg/ml. Optimal dilutions/concentrations should be determined by the end user. |
| <b>Conjugation:</b>           | Unconjugated   |
| <b>Immunogen:</b>             | <a href="#">abx653717</a> - Recombinant Mouse HSPG2 expressed in E. coli   |
| <b>Form:</b>                  | Liquid   |
| <b>Purification:</b>          | Purified by antigen-specific affinity chromatography, followed by Protein A affinity chromatography.                         |
| <b>Storage:</b>               | Aliquot and store at -20°C. Avoid repeated freeze/thaw cycles.   |
| <b>UniProt Primary AC:</b>    | Q05793 ( <a href="#">UniProt</a> , <a href="#">ExpASY</a> )  |
| <b>Gene Symbol:</b>           | HSPG2  |
| <b>GeneID:</b>                | <a href="#">15530</a>  |

# Datasheet

Version: 4.0.0

Revision date: 28 Jul 2023



**KEGG:** mmu:15530

**Buffer:** 0.01 M PBS, pH 7.4, containing 0.05% Proclin-300, 50% glycerol.

**Concentration:** 0.67 mg/ml

**Note:** This product is for research use only.

For Reference Only