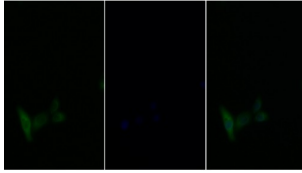


Insulin Receptor Substrate 1 (IRS1) Antibody

Catalogue No.: abx177004



IF analysis of Human HeLa cells, using Rabbit Anti-Human IGF1 Antibody (20 µg/ml) and FITC-conjugated Goat Anti-Rabbit antibody ([abx400042](#), 0.2 µg/ml).

Insulin Receptor Substrate 1 (IRS1) Antibody is a Rabbit Polyclonal antibody against Insulin Receptor Substrate 1 (IRS1).

Target:	Insulin Receptor Substrate 1 (IRS1)
Clonality:	Polyclonal
Reactivity:	Human
Tested Applications:	WB, IHC, IF/ICC
Host:	Rabbit
Recommended dilutions:	WB: 0.5-2 µg/ml, IHC: 5-20 µg/ml, IF/ICC: 5-20 µg/ml. Optimal dilutions/concentrations should be determined by the end user.
Conjugation:	Unconjugated
Immunogen:	abx653883 - Recombinant Insulin Receptor Substrate 1 (IRS1)
Form:	Liquid
Purification:	Purified by antigen-specific affinity chromatography, followed by Protein A affinity chromatography.
Storage:	Aliquot and store at -20°C. Avoid repeated freeze/thaw cycles.
Buffer:	0.01 M PBS, pH 7.4, containing 0.05% Proclin-300, 50% glycerol.
Note:	This product is for research use only.