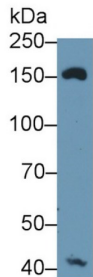


## Macrophage Mannose Receptor 1 (MRC1) Antibody

Catalogue No.: abx177447



Western blot analysis of Mouse Liver lysate, using Rabbit Anti-Human MRC1 Antibody (1 µg/ml) and HRP-conjugated Goat Anti-Rabbit antibody ([abx400043](#), 0.2 µg/ml).

Mannose Receptor C Type 1 (MRC1) Antibody is a Rabbit Polyclonal antibody against Mannose Receptor C Type 1 (MRC1).

<b>Target:</b>	Macrophage Mannose Receptor 1 (MRC1)
<b>Clonality:</b>	Polyclonal
<b>Reactivity:</b>	Human
<b>Tested Applications:</b>	WB, IHC, IF/ICC
<b>Host:</b>	Rabbit
<b>Recommended dilutions:</b>	WB: 0.01-2 µg/ml, IHC: 5-20 µg/ml, IF/ICC: 5-20 µg/ml. Optimal dilutions/concentrations should be determined by the end user.
<b>Conjugation:</b>	Unconjugated
<b>Immunogen:</b>	<a href="#">abx654269</a> - Recombinant Mannose Receptor C Type 1 (Pro644-Pro787) expressed in E. coli
<b>Form:</b>	Liquid
<b>Purification:</b>	Purified by antigen-specific affinity chromatography, followed by Protein A affinity chromatography.
<b>Storage:</b>	Aliquot and store at -20°C. Avoid repeated freeze/thaw cycles.
<b>Buffer:</b>	0.01 M PBS, pH 7.4, containing 0.02% NaN <sub>3</sub> , 50% glycerol.
<b>Specificity:</b>	Cross-reacts with Mouse MRC1.
<b>Concentration:</b>	0.5 mg/ml
<b>Note:</b>	This product is for research use only.