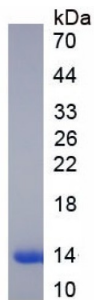


Datasheet

Version: 3.0.0
Revision date: 24 Nov 2024

Human Alpha Lactalbumin (LALBA) Protein

Catalogue No.: abx652313



Human Alpha-Lactalbumin (aLA) Protein is a Native Human protein expressed in Human.

Target:	Alpha Lactalbumin (LALBA)
Origin:	Human
Expression:	Native
Tested Applications:	WB, SDS-PAGE
Host:	Human
Conjugation:	Unconjugated
Form:	Lyophilized
Purity:	> 98% (SDS-PAGE)
Purification:	Purified by salt co-precipitation and ion exchange chromatography.
Reconstitution:	Reconstitute in ddH ₂ O to a concentration up to 0.5 mg/ml. Do not vortex.
Storage:	Store at 2-8 °C for up to one month. Store at -80 °C for up to one year. Avoid repeated freeze/thaw cycles.
UniProt Primary AC:	P00709 (UniProt , ExPASy)
KEGG:	hsa:3906
String:	9606.ENSP00000301046
Molecular Weight:	Calculated MW: 14.0 kDa Observed MW (SDS-PAGE): 14 kDa

Datasheet

Version: 3.0.0

Revision date: 24 Nov 2024



- Sequence:** This product is a native protein and the sequence has not been determined.
- Buffer:** Prior to lyophilization: 20 mM Tris, 150 mM NaCl, pH 8.0, containing 0.01% Sarcosyl, 5% Trehalose.
- Activity:** Not tested
- Concentration:** Prior to lyophilization: 50 µg/ml
- Note:** This product is for research use only.
Not for human consumption, cosmetic, therapeutic or diagnostic use.

For Reference Only