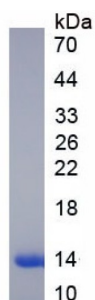


Human Alpha Lactalbumin (LALBA) Protein

Catalogue No.: abx652313



Human Alpha-Lactalbumin (aLA) Protein is a Native Human protein expressed in Human.

Target: Alpha Lactalbumin (LALBA)

Origin: Human

Expression: Native

Tested Applications: WB, SDS-PAGE

Host: Human

Conjugation: Unconjugated

Form: Lyophilized

Purity: > 98% (SDS-PAGE)

Purification: Purified by salt co-precipitation and ion exchange chromatography.

Reconstitution: Reconstitute in ddH₂O to a concentration up to 0.5 mg/ml. Do not vortex.

Storage: Store at 2-8 °C for up to one month. Store at -80 °C for up to one year. Avoid repeated freeze/thaw cycles.

UniProt Primary AC: P00709 ([UniProt](#), [ExPASy](#))

KEGG: hsa:3906

String: [9606.ENSP00000301046](#)

Molecular Weight: Calculated MW: 14.0 kDa
Observed MW (SDS-PAGE): 14 kDa

Datasheet

Version: 4.0.0

Revision date: 12 Mar 2025



- Sequence:** This product is a native protein and the sequence has not been determined.
- Buffer:** Prior to lyophilization: 20 mM Tris, 150 mM NaCl, pH 8.0, containing 0.01% Sarcosyl, 5% Trehalose.
- Activity:** Not tested
- Concentration:** Prior to lyophilization: 50 µg/ml
- Note:** THIS PRODUCT IS FOR RESEARCH USE ONLY. NOT FOR USE IN DIAGNOSTIC, THERAPEUTIC OR COSMETIC PROCEDURES. NOT FOR HUMAN OR ANIMAL CONSUMPTION.

For Reference Only